

# Saint *the* JUDE APOSTLE

519 KNAPP STREET & 1225 OREGON STREET  
OSHKOSH, WISCONSIN



## 1<sup>ST</sup> SUNDAY OF LENT

The devil said to him, "All this will be yours, if you worship me."  
Jesus said to him in reply, "It is written:  
You shall worship the Lord, your God,  
and him alone shall you serve."  
- Lk 4:6a, 7-8

PARISH ADMINISTRATOR  
FR. LOUIS GOLAMARI

MASS SCHEDULE  
SATURDAY, 4:30 PM AT  
ST. VINCENT CHURCH

SUNDAY, 7:30 AM AT  
SACRED HEART CHURCH

SUNDAY, 9:30 AM AT  
ST. VINCENT CHURCH

SUNDAY, 11:00 AM AT  
SACRED HEART CHURCH

CONFESSIONS  
FIRST FRIDAY OF THE MONTH  
AFTER 7:30 AM MASS-SH  
SATURDAY, 3:30 PM-SV

PARISH OFFICE  
1025 W. 5TH AVENUE  
OSHKOSH, WI 54902  
HOURS: 8 AM-4:30 PM M-TH  
8 AM-2:30 PM FRI  
(920) 235-7412

WEBSITE  
[WWW.STJUDEOSHKOSH.ORG](http://WWW.STJUDEOSHKOSH.ORG)

March 9, 2025

Live the Gospel, Share the Good News,  
Bring others to Christ - all for the glory and honor of God.

### PASTORAL STAFF

Deacon.....Pat Gelhar  
Deacon.....Pete Cheskie  
Deacon.....Brad Gallenberg  
Care Coordinator.....Bertie Albright  
Coordinator of Music .....Marshall Potter

### FAITH FORMATION STAFF

RE Coordinator.....Courtney Foster

### ADMINISTRATIVE STAFF

Business Manager ...Dcn. Brad Gallenberg  
Bookkeeper .....Jan Fendt  
Tech/Communications.....Caleigh Lippert

### SPECIAL EDUCATION RELIGION PROGRAM (SERV)

Tom Mentele.....426-5682

### PARISH COUNCIL

Ben Schneider, Chair  
Theresa Warwick, Vice-Chair  
Cindy Hackbarth, Secretary  
Jim Boyce  
Derek Dettlaff  
Jeff Paulick  
Connie Schuster

### FINANCE COUNCIL

Nick Bauer                   George Benz  
Nancy Hackbarth       Sue Knobloch  
Brenda Morrell         Dave Putzer  
Mike Scharff

### TRUSTEES

Derek Dettlaff .....Secretary  
Mike Scharff .....Treasurer

### LOURDES ACADEMY

President,  
Mr. John Dinegan .....426-3626  
Principal Lourdes Academy, HS  
Mr. David Mikesell.....235-5670  
Principal, Elem & MS  
Mrs. Amy Geffers .....235-4060  
Associate Principal, Elem & MS  
Mr. Reed Tyriver.....235-5670

### OSHKOSH CATHOLIC CEMETERIES

Administrator  
Deacon Pat Gelhar .....(920) 379-2837  
email: office@stjudeoshkosh.org  
Sexton  
Jan Fendt.....(920) 235-7412



### ST. JUDE MASS SCHEDULE

Weekday  
Wednesday & Friday.....7:30 am (SH)  
Tuesday.....7:30 am (SV)  
\*\*With rosary starting at 7:00 am\*\*  
*If Oshkosh schools are closed due to the weather, we will not have morning Mass.*

PK-Children's Liturgy of the Word  
During Mass.....9:30 am (SV)

Spanish Mass (MBS, St. Peter Church, Oshkosh)  
1st and 3rd Sunday.....12:30 pm

### AREA PARISHES

#### WEEKDAY MASS SCHEDULE

Most Blessed Sacrament  
St. Peter's Church  
Mon., Wed., Thurs., Fri., .....7:30 am  
St. Mary's Church  
Tuesday.....6:30 pm

St. Raphael  
Monday, Tuesday & Wednesday...8:00 am  
Thursday & Friday.....7:15 am

Mercy Hospital Mass  
1st and 3rd Wednesdays.....2:00 pm

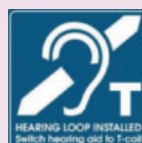
### CITY-WIDE EUCHARISTIC ADORATION



Eucharistic Adoration is located back at St. Mary's Church with hours being:  
**M-Th 9 am to 8 pm**

Please contact Most Blessed Sacrament Parish for more information-  
231-9782

Don't forget to set your hearing aid to "T Coil" setting.



### PARISH REGISTRATION



Welcome to St. Jude Parish!  
We would love to learn more about you—please scan the code to start the registration process!

### SACRAMENT OF MARRIAGE

Are you recently engaged or ready to begin the process for a wedding in the Church? Here is the first step to have your Marriage in the Church!



### BAPTISM PREPARATION



Are you interested in getting your child baptized in the Catholic Church? The first step is scanning this Code!

### OCIA- ORDER OF CHRISTIAN INITIATION

The OCIA is a formational process that helps lead people to explore the Catholic faith through prayer, study & discussion. Contact us today!



### MINISTRY OF THE SICK



We encourage you to notify the Parish Office if family members or friends are seriously ill or hospitalized.

### PASTORAL VISITS

Care Ministers are available for Pastoral Visits, if you or a loved one are in need of spiritual companionship. Please let us know if you are home-bound or have recently moved into a care facility so that we may continue to meet your ministerial needs.



**PRAYER CHAIN REQUESTS**  
Call Jim or Paulette at: .....688-3237

## Lenten Reflection...

As we begin the season of Lent, let's reflect on an important truth: **Jesus is not just a part of our lives; He is the heart of our lives.** This challenges us to rethink our relationship with Him and His role in our daily lives.

In our busy world, it's easy to separate our lives into different sections: work, family, hobbies, and maybe a bit of time for Jesus through attending Mass, praying, or reading Scripture. But if we see Jesus as just another part of our busy schedules, we might miss the powerful change He can bring. What if we viewed Jesus as the center of everything we do? Lent is the perfect time to focus our lives on Jesus, who is all and in all.

When Jesus is at the center, He influences our actions, decisions, and relationships. This means inviting Him into our joys and struggles. We can look to Him for guidance in every choice we make. When we face difficulties, instead of relying solely on worldly solutions, we can seek His strength and direction.

Putting Jesus at the center also changes how we interact with others. When we show Christ's love, we offer grace, compassion, and understanding to those around us. We become vessels of His love, sharing His light in our communities. Inspired by His selfless example, we grow in generosity as we help those in need.

Recognizing Jesus as the heart of our lives also deepens our faith. It encourages us to spend intentional time in prayer, Scripture, and community. The more we open ourselves to His presence, the more we will feel His love and guidance, enriching our spiritual journeys.

Let's ask ourselves: How can we shift our focus from seeing Jesus as a part of our

lives to making Him the core of our existence? It might start with small steps—setting aside time for prayer, reading Scripture daily, and being intentional in our community service. These actions help us build a heart-centered relationship with Jesus.

The Lenten wristbands we wear become a gentle daily reminder that ***“Jesus is not just part of our lives but the heart of our lives.”*** Besides the traditional Lenten practices of fasting, prayer, and almsgiving, let's take time to walk the way of cross and on Wednesdays and Fridays, know more about the Holy Mass through four video series, bring your whole family to learn more about our faith through interactive videos, be part of the Lenten Book Discussion, ***“Opening the Holy Door.”*** For details about different activities and programs offered to make our Lenten journey intentional and meaningful, please see the bulletin.

As a parish family during this Lenten season, let's support each other in growing our relationship with Jesus. He is our foundation, our strength, and our joy. **Jesus should not be just a footnote in our lives; He should be the main character, guiding every chapter of our stories.** May we all strive to make Jesus the heart of our lives—today and always!

Entrusting each of you to the Eucharistic Lord,

Fr. Louis Golamari

# The Mass: An Introduction Study Series

This is a four part series presented by the Archdiocese of Mobile. The series features numerous presenters that ask four questions:

- 1) Why worship on Sunday?
- 2) Why a meal?
- 3) Why do we worship the way we do?
- 4) Why does the extraordinary come to us in ordinary ways?

**Mondays: March 10, 17, 24, 31**

**Bastian Hall \* 9 am - 10 am**

(Due to construction/deconstruction in Leannah Hall)

To register please contact Deacon Brad at



office@stjudeoshkosh.org  
920.235.7412

There is no cost \* Anyone is welcome!



Wednesdays starting March 12  
Stations at 5:15 pm at St. Vincent  
Soup at 5:45 pm in Bastian Hall

# Soup and Stations

Fridays starting March 7  
Stations at 12:00 pm at Sacred Heart  
Soup at 12:30 pm Leannah Hall

To sign up to bring soup, scan one of the QR codes or call the parish office (920) 235-7412

Wednesday



Friday



# LENTEN PENNY WARS



Throughout the season of Lent, there will be containers for each Religious Ed Grade level in the back of the church for you to contribute your pennies to.

You can gain points by adding pennies and bills to a container or lower points by adding silver coins.

Penny war proceeds will help the RE students raise money to sponsor an Unbound child as an RE Family

### Positive Points

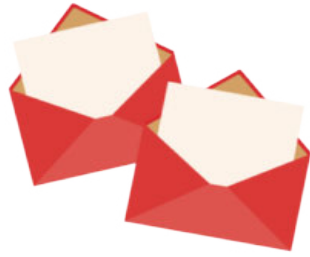
- Each penny = +1 point
- \$1 bill = +100 points
- \$5 bill = +500 points
- \$10 bill = +1,000 points

### Negative Points

- Nickel = -5 points
- Dime = -10 points
- Quarter = -25 points

**CABRINI MOVIE**  
**MONDAY, MARCH 24**  
**5:30 PM**  
**BASTIAN HALL**  
PG-13  
Run time: 2 h 25 min  
No Cost  
Popcorn & Refreshments Provided!

## ATTENTION CARD SENDERS!



If you are someone who is sending cards to our elderly or homebound, first— thank you! You are doing an awesome and caring thing. Second, if you could please call the office to tell me you are doing this I would greatly appreciate it. We spent many hours last year organizing the card lists. Only those who are signed up as card senders receive updated lists. By letting us know you are sending cards we can provide you with the addresses and names, cards, and postage. Lately we have been receiving returned cards because they are being sent to those who are deceased. This is upsetting to the families of the deceased. Also, we would be glad to sign you up for this ministry if you wish to do so!

For those who are currently registered with me to send cards, your new lists and card packages are all set for you to pick up in the church office. Thank you for doing this wonderful ministry that means so much to our parishioners.

Bertie Albright,  
Care Ministry and Outreach Coordinator



### Crayon Recycling Drive

The Caring for God's Creation committee is excited to announce we will be sponsoring a crayon recycling drive.

Throughout the season of Lent there will be bins located in the backs of the churches, the parish office, and at RE classes. Simply bring any old or broken crayons and place them in the bins. Please leave the wrappers on. It's as simple as that! The CFGC Committee will take care of the rest.



## BRINGING HOPE TO THE WORLD

<b>St. Jude's 2025 Goal is</b>	<b>\$77,128</b>
<b>Current Registered Members</b>	<b>1347</b>
<b>Appeal Contributors to date</b>	<b>234</b>
<b>Amount collected to date</b>	<b>\$52,725.00</b>
<b>Percent</b>	<b>68%</b>

### Can this marriage be saved?

A wedding day is an exciting time for couples. The anticipation and emotion of the Mass and celebration is wonderful, but the hard work comes after you walk up the aisle and two lives join to make one.

When couples face problems in their marriage, Catholic Charities offers help. Here, couples can work on issues caused by communication breakdowns, finances, family issues, infidelity and other challenges within their relationship.

Following an initial assessment, a licensed counselor will work with couples to develop goals for their relationship and learn skills to help reach those goals.

Your gift to the Bishop's Appeal allows Catholic Charities to promote healthy marriages. To make a gift today, contact your parish, visit the Bishop's Appeal website at [www.catholicfoundationgb.org/give](http://www.catholicfoundationgb.org/give), or call Tammy at (920) 272-8123.



# CITY-WIDE LENTEN RECONCILIATION

Thursday, March 27  
6:00 pm (St. Vincent's Church)

Thursday, April 10  
2:00 pm (St. Raphael's Church)

Dear Parishioners,

The Ministry of Holy Communion to the homebound is an important and beautiful ministry of the Church. This Ministry allows us to maintain that connection between Christ, the Church, and our local Parish Community. Recently, Bishop Ricken asked all the parishes across the diocese of Green Bay to review how this is done and to follow the norms and guidelines that he has developed. We are in the process of doing that at St. Jude. To help us move forward in this process, please pay attention to the following:

- Please let us know if you are currently bringing communion to an individual family member (e.g., a spouse, a parent, a family member, a parishioner, a friend, etc.). It's important to let us know your name, to who you bring Communion, and whether you do so regularly or occasionally.
- Please send an email to [balbright@stjudeoshkosh.org](mailto:balbright@stjudeoshkosh.org). This email belongs to Bertie Albright, the parish Care Ministry Coordinator. You may also contact her at the parish office by phone or in person to let her know.
- If a family member is not trained and commissioned as an Extraordinary Minister of Holy Communion, we will need to ask that they be trained if they continue to serve in this way.
- For those who serve on our parish care ministry team, we will contact you as time goes on with updates on how we perform specific ministry tasks.

Thank you, and I look forward to your cooperation in this effort.

Fr. Louis Golamari

## Bringing Communion to the Homebound/Sick

Following Bishop David Ricken's pastoral letter and the document: *"Norms and Guidelines for the Diocesan Practice of Distribution and Reception of Holy Communion,"* sent to us on 2/5/2025, and also following *"The directives in Holy Communion and Worship of the Eucharistic Mystery Outside Mass,"* we inform you of a few changes in the Distribution and Reception of Holy Communion at our parish.

- Starting the Weekend of March 22-23, 2025, we will no longer distribute communion to the homebound in the communion line at Mass.
- Anyone coming forward in the communion line with a pyx will be asked to speak with the priest or deacon after the Mass.
- The distribution of the Holy Communion to the Extraordinary Ministers and Care Ministers of the sick and homebound will be done immediately after the conclusion of each Mass.
- Unless the person has their own pyx, we will provide them a pyx and a burse to bring holy communion.
- Immediately after each Mass, the deacon or priest will go to the area near the credence table in the sanctuary to distribute the Eucharist for the sick/homebound.
- Initially, we will confirm that the person is a currently trained Extraordinary Minister of Holy Communion or Care Minister on the parish list and ask who is receiving communion.
- The pastor and Care Ministry Coordinator need to know this information to better care for and coordinate this ministry for the sick and the homebound on a regular basis.
- A clipboard will be available in the church to write this information down. This way, we can keep a record of the ministers and recipients with the Care Ministry Coordinator.
- Please return both Pyx and burse, if they belong to the church, the next time you come to church. They may return them in the basket in the sacristy, where they will stay until purified.
- No parishioner or family member is to bring Holy Communion to the sick or homebound unless they are commissioned Extraordinary Ministers of Holy Communion or Care Ministers.

## Thank you!

This past Christmas season, an incredible 1,161 Catholic groups (including St. Jude Parish) assembled Box of Joy gifts that were delivered to 243 drop-off centers throughout the country. This dedication to bringing joy to vulnerable children is inspiring!

Your generosity helped bless **135,567** children this past Christmas season in Guatemala, Malawi, Peru, the Dominican Republic, Haiti, Grenada, El Salvador, and Honduras.



# WATER FOR LIFE

Want to experience a more meaningful Lent?

We encourage you to support our Parish's Lenten outreach, *Water for Life*, to bless families in Zambia and Malawi with safe, clean water. Your prayers, fasting and almsgiving will help our Catholic partners in Africa drill 2 wells impacting over 390 people for decades to come!



## Our goals are to:

### Raise Funds

...raise \$8,190 which will fund the drilling of 2 wells — giving fresh water to over 390 people for decades to come! Donations can be made by dropping them off in the office OR in the collection baskets at any Mass in an envelope marked "Water for Life"

### Offer Prayers

...for ourselves, for people in our lives, and people located where the wells are to be drilled. There will be a well at both church sites for those who wish to write prayer intentions and place them in the well.

## MARCH POTLUCK

# SENIOR YOUNG AT HEART

WEDNESDAY, MARCH 12

11:30 AM LEANNAH HALL

## CELEBRATE ST. PATRICK'S DAY

LIVE MUSIC BY "THE DROWSY MAGGIE'S BAND"

Donation: Oshkosh Area Food Pantry  
Applesauce/Fruit cups  
Canned fruit/vegetables/meat  
Chef Boyardee  
Flour/Sugar  
Jelly/Jam  
Ramen Noodles  
Rice/Pasta  
Soup

## LAKESIDE SPEAKERS SERIES



**Wed. March 12**  
**Sr. Elise Cholewinski, OSF**

“Original Baptism - Original Sin.”  
Enter into Lent from a new perspective on  
the season: Baptism.

**Jesuit Retreat House**  
4800 Fahrwald Rd., Oshkosh  
6:30 pm - 8:00 pm  
Open to the public  
Free-will offerings appreciated

## Esto Vir Oshkosh

**Men's Spirituality Morning**  
**Saturday, March 15**



**Tim Jessick, DO**

*Chief Medical Officer, Post Acute  
Care— SSM Health/Co-Founder,  
Palliative Care Network of  
Wisconsin*

### **Schedule:**

7:00 am — Arrival/Welcome  
7:05 am — Confessions (Fr. David)  
7:20 am — Holy Rosary (Dcn. John)  
7:45 am — Holy Sacrifice of the Mass (Fr. David)  
8:15 am — Continental Breakfast/Fellowship  
8:30 am — Presentation (Dr. Tim Jessick)  
9:30 am — Wrap up  
9:45 am — Departure

Free Will Offering

### **Location:**

Fr. Carr's Place 2B — Mother Teresa Center  
St. Martin de Porres Chapel  
1062 N. Koeller St.  
Oshkosh, WI, 54902

## Kneeler For Reception of the Holy Eucharist

Bishop Ricken has instructed the parishes within the Diocese of Green Bay to use prudence on how Holy Communion is distributed. This past year we have seen an increase in people kneeling while receiving. It is difficult for these individuals to kneel on the floor and then stand up.



**Procedure:** If you would rather kneel when receiving the Eucharist please continue up one of the two central lines - upon kneeling Father Louis will administer Communion to you.

*“The norm established for the Dioceses of the United States of America is to receive Eucharist while standing unless an individual wishes to receive Communion while kneeling. Neither standing nor kneeling is a more reverent way to receive the Sacrament” (Diocese of Green Bay)*





**KNIGHTS OF COLUMBUS**  
**IN SERVICE TO ONE. IN SERVICE TO**  
**ALL.**  
**COUNCIL 614— OUR LADY OF**

**Prayer for the First Week of Lent**

Heavenly Father,  
 As we begin this Lenten journey,  
 open our hearts to your grace.  
 Help us to turn away from sin  
 and embrace the path of repentance.  
 May our fasting, prayer, and almsgiving  
 bring us closer to You  
 and deepen our love for those in need.  
 Give us strength to resist temptation,  
 humility to seek Your mercy,  
 and courage to follow Christ  
 more faithfully each day.  
 May this season renew our spirits  
 so that we may rejoice  
 in the victory of Easter.  
 Amen.

*Always remember God loves you.*

**Jay Schaefer—Grand Knight, Council 614**  
**kofc614@gmail.com**  
**(920) 410-1284**

**Learn more at [kofc.org](http://kofc.org) Like us on Facebook**

**ADVERTISER OF THE WEEK**



Please support our bulletin advertisers!  
 Their generosity allows us to publish our bulletins  
 at no cost to the parish.

**Lourdes Academy High School**  
**Production of**

**Seussical™**

March 14-16  
 The Grand Oshkosh

To purchase tickets, visit  
[www.lourdes.today/musical](http://www.lourdes.today/musical)

**NOW OPEN: 2025 Summer Registration!**

**CAMP TEKAKWITHA**  
 SHAWANO, WI

**Who do we serve?**

- All youth ages 6-17!
- Mini-Week Lil Tek campers
  - Full-Week campers
  - LeaderQuest growing leaders
  - Explorers adventurers

**What do we do?**

- Nature Exploration
- Mass & Daily Prayer
- Archery Instruction
- Boating & Swimming
- Lily Games Competition
- Night Hikes & Campfires



W5248 Lake Drive  
 Shawano, WI 54166

715.526.2516  
[camptekakwitha.org](http://camptekakwitha.org)



MASS INTENTIONS

**Saturday, March 8**

4:30 pm (SV) † Cathy Chomo

**Sunday, March 9**

7:30 am (SH) † LeRoy & Lucille  
Kinderman

9:30 am (SV) St. Jude Parish

11:00 am (SH) † Richard Knobloch  
† Katie Hassler

† Dec'd Members of the  
SVDP Society

**Monday, March 10**

No Mass

**Tuesday, March 11**

7:30 am (SV) †

**Wednesday, March 12**

7:30 am (SH) † Caroline Rossebo

**Thursday, March 13**

No Mass

**Friday, March 14**

7:30 am (SH) † Steve Stadler

**Saturday, March 15**

4:30 pm (SV) † Becky Baehman  
† Jim Jungwirth  
† Gary Weber

**Sunday, March 16**

7:30 am (SH) † Fr. Francis Uder

9:30 am (SV) † Barbara Peterson

11:00 am (SH) St. Jude Parish

(SV)-St. Jude Parish, St Vincent Church  
(SH)-St. Jude Parish, Sacred Heart Church

IN LOVING REMEMBRANCE

**The Hosts and Wine Memorial**

Our Hosts & Wine for Masses this week  
are being given in loving memory of

*Genevieve & Gerhard Krueger*

**The Sanctuary Candle Memorial**

The Sanctuary Candle is burning this week  
in memory of

*Jay & Nancy Leivian*

*Genevieve & Gerhard Krueger*

COMMUNION TO SHUT-INS

**Sunday, March 9** Chris King

**Sunday, March 16** Judy Bannow

**Sunday, March 23** Ragan & Chris Pecore

**Sunday, March 30** Jim Krueger

LITURGICAL ROLES  
FOR MARCH 15 & 16

**Lectors**

4:30 pm (SV) M. E. Sedlachek,  
L. M. Megal

7:30 am (SH) M. Marx, N. Weber

9:30 am (SV) K. Neuens, C. Foster

11:00 am (SH) K. Warncke, C. Bauer

**Servers**

4:30 pm (SV) B. Busby, A. Tostenson

7:30 am (SH) J. Bernhagen,  
M. Vandehey

9:30 am (SV) E. & L. Thorson

11:00 am (SH) A. Warncke, **1 NEEDED**

**Eucharistic Ministers**

4:30 pm (SV) M. Baehman, J. & R. Marx

7:30 am (SH) B. Poliak, N. Ratchman

9:30 am (SV) P. Ostertag, J. Potratz

11:00 am (SH) N. Bauer, **1 NEEDED**

**Greeters**

4:30 pm (SV) **2 NEEDED**

7:30 am (SH) **2 NEEDED**

9:30 am (SV) A. Nitz, **1 NEEDED**

11:00 am (SH) K. Honsinger, A. Salisbury

**Ushers**

4:30 pm (SV) C. Baier, A. Sedlachek,  
S. Sturm, **1 NEEDED**

7:30 am (SH) M. Marx, E. & M. Scharff,  
T. Suszek

9:30 am (SV) J. & J. Boyce, D. Dettlaff,  
W. Potratz

11:00 am (SH) P. Pickart, P. Augustine,  
G. Griedl, B. Hollnagel

**Sacristans**

4:30 pm (SV) R. Marx

7:30 am (SH) B. Dumann

9:30 am (SV) M. Jantz

11:00 am (SH) S. Sullivan

**Musicians**

4:30 pm (SV) C. Schuster, M. Potter

7:30 am (SH) St. Jude Choir, M. Potter

9:30 am (SV) A. Thorson, M. Potter

11:00 am (SH) C. Schuster, M. Potter

**Church Openers**

4:30 pm (SV) J. Meisinger

7:30 am (SH) J. Ratchman

9:30 am (SV) M. Putzer

WEEKLY COLLECTION INFO FOR  
MARCH 1 & 2

Envelopes	\$10,631.22
Loose	\$775.71
WeShare	\$488.62
Direct	\$168.00
Other	\$4,000.00
<b>Total</b>	<b>\$16,063.55</b>
Budget	\$13,461.54

WEEKLY CALENDAR

**Sunday, March 9**

8:30 am Coffee & Donuts (LH)

10:30 am Coffee & Donuts (BH)

**Monday, March 10**

9:00 am The Mass Study (BH)

6:00 pm Card Group (LH)

**Tuesday, March 11**

1:00 pm Book Discussion (PC)

1:30 pm Legion of Mary (PC)

**Wednesday, March 12**

8:00 am SVDP Society (PC)

10:00 am SYAH Potluck (LH)

5:15 pm Soup & Stations (SV/BH)

6:00 pm HS Religious Ed (SVS)

**Thursday, March 13**

9:00 am Book Discussion (PC)

12:30 pm Grief Support Group (PC)

1:00 pm Marian Prayer (SH)

5:30 pm Grief Support Group (PC)

6:00 pm CFM Marriage Series (BH)

6:00 pm Lenten Family Study (SVS)

**Friday, March 14**

12:00 pm Soup & Stations (SH/LH)

HR—Heritage Room (St. Vincent site)

BH—Bastian Hall (St. Vincent site)

SV—St. Vincent Church

SH—Sacred Heart Church

LH—Leannah Hall (Sacred Heart site)

PC—Parish Center (Office Building)

SVS—St. Vincent School Building

READINGS FOR THE WEEK

**Sunday, March 9**

Dt 26:4-10/Ps 91:1-2, 10-11, 12-13, 14-15 (see 5b)/Rom 10:8-13/Lk 4:1-13

**Monday, March 10**

Lv 19:1-2, 11-18/Ps 19:8, 9, 10, 15/Mt 25:31-46

**Tuesday, March 11**

Is 55:10-11/Ps 34:4-5, 6-7, 16-17, 18-19/Mt 6:7-15

**Wednesday, March 12**

Jon 3:1-10/Ps 51:3-4, 12-13, 18-19/Lk 11:29-32

**Thursday, March 13**

Est C:12, 14-16, 23-25/Ps 138:1-2ab, 2cde-3, 7c-8/Mt 7:7-12

**Friday, March 14**

Ez 18:21-28/Ps 130:1-2, 3-4, 5-7a, 7bc-8/Mt 5:20-26

**Saturday, March 15**

Dt 26:16-19/Ps 119:1-2, 4-5, 7-8/Mt 5:43-48

**Sunday, March 16**

Gn 15:5-12, 17-18/Ps 27:1, 7-8, 8-9, 13-14/Phil 3:17-4:1 or 3:20-4:1/Lk 9:28b-36

**KONRAD-BEHLMAN**  
FUNERAL HOME

"Serving all Faiths" in Oshkosh  
and the Fox Valley since 1875

Specializing in Retirement Planning, Medicaid, Spend  
Down and Burial Space Protection of Assets.

Two Oshkosh locations to serve You better!  
(920) 231-1510    
[www.konrad-behlman.com](http://www.konrad-behlman.com)

**KUNDE**  
**MEMORIALS, Inc.**

Providing beautiful, quality  
crafted custom monuments  
since 1957

[www.kundememorials.com](http://www.kundememorials.com)  
1690 Ohio St. 235-5822

  
**LANDSCAPE SOLUTIONS**  
OF WISCONSIN LLC

Landscape Design And Installation  
[www.landscape-solutions-wi.com](http://www.landscape-solutions-wi.com)  
2979 W. 20th Ave., Oshkosh, WI 54904  
**920-420-8054**

**GREEN BAY**  
**DIOCESAN MUSEUM**  
At St. Francis Xavier Cathedral

140 So. Madison St.  
Green Bay, WI 54301

Tours Available  
Phone **920-432-4348**

**LOURDES**  
ACADEMY

Prepared for College. Prepared for Good.™  
Faith-filled Pre-K-12 education

Call **920.426.6421**  
for a tour  
or visit [www.Lourdes.today](http://www.Lourdes.today)

**Zillges**  
LANDSCAPE & FIREPLACE

1990 W. Snell Rd., Oshkosh  
New Hwy 45 just North of Hwy 41  
(920) 231-1994  
[www.zillges.com](http://www.zillges.com)

**SHORT**  
**STAFFED?**

Place an ad here to find  
new local talent for  
your business.



**IF YOU LIVE ALONE**

**MDMedAlert!**™ As Low As **\$19<sup>95</sup>** /mo.

✓ Ambulance ✓ Police/Fire  
✓ Family/Friends ✓ GPS & Fall Alert

**CALL NOW! 800.808.9294**  
  
[md-medalert.com](http://md-medalert.com)

**LOURDES**  
ACADEMY

Prepared for College. Prepared for Good.™  
Faith-filled Pre-K-12 education

Call **920.426.6421**  
for a tour  
or visit [www.Lourdes.today](http://www.Lourdes.today)

 526 W. 11th Ave.  
Oshkosh, WI 54902  
(920) 233-8334  
Fax 233-8364

**POESCHL PRINTING**  
COMPANY, INC.

**CALL**  
**800-950-9952**

**GP**  
Gomach Plumbing Inc.  
Residential • Commercial  
New Construction • Remodels • Repairs • Service  
712 Ohio St., Ste. B, Oshkosh  
Serving Oshkosh and the Fox Valley  
Call for a FREE Quote!  
920-420-7815

Place Your Ad Here and  
Support our Parish!

Instantly create and  
purchase an ad with

**AD CREATOR STUDIO**

  
[4lpi.com/adcreator](http://4lpi.com/adcreator)



**Hickey**

✓ Voted Best  
Roofing Contractor  
14 Years Running



(920) 426-4008  
[hickeyroofing@msn.com](mailto:hickeyroofing@msn.com)

**SUPPORT**  
**OUR PARISH**

Local business ads  
sponsor the printing of  
our bulletin.  
[4lpi.com/adcreator](http://4lpi.com/adcreator)

**G REINKE & CO**  
Quality Service Since 1908  
Monuments • Markers • Mausoleums  
Laser etching of scenes and  
photos on granite or glass  
[www.greinkeandco.com](http://www.greinkeandco.com)  
920-231-0650 800-378-9073  
After Hours Call 233-6260  
900 S Main 920-231-0650

**SUPPORT**  
**OUR**  
**ADVERTISERS!**

24 HOUR EMERGENCY SERVICE  
Industrial • Commercial • Residential

**BEEZ**  
ELECTRIC, INC.  
ELECTRICAL CONTRACTORS  
1901 Osborn Ave. • Oshkosh, WI  
920 231 6655 [WWW.BEEZELECTRIC.COM](http://WWW.BEEZELECTRIC.COM)

**ADT-Monitored Home Security**  
Get 24-Hour Protection From a Name You Can Trust

- Burglary
- Flood Detection
- Fire Safety
- Carbon Monoxide

**833-287-3502**

**LET'S GROW**  
**YOUR BUSINESS**

Place Your Ad Here  
and Support Our Parish!

**CONTACT ME**  
**Janet Axtell**

[jaxtell@4LPi.com](mailto:jaxtell@4LPi.com)  
(800) 950-9952 x2539

**Shaun P. McDonald, M.D.**  
Board Certified Dermatologist

**Fox Valley**  
Dermatology SC

515 S. Washburn St., Ste. 204  
Oshkosh, WI 54904  
920 232-1130 fax: 920 232-1175  
[www.foxvalleydermatology.com](http://www.foxvalleydermatology.com)

**WE APPRECIATE OUR**  
**ADVERTISERS!**

**FREE**  
**AD**  
**DESIGN**

with  
purchase  
of this  
space

**CALL**  
**800-950-9952**

**CALL**  
**800-950-9952**

  
Marsh Family Eyecare  
(920) 426-2020  
Now Open at 2510 W. 9th Ave.

**Fiss & Bills - Poklasny**  
Funeral Homes & Crematory  
Serving All Faiths Since 1904

865 S. Westhaven Dr.  
870 W. South Park Ave.  
**920-235-1170**  
[fissbillspoklasnyfuneralhome.com](http://fissbillspoklasnyfuneralhome.com)

**W I H L M**  
d e n t a l



**Michelle A. Wihlm, D.D.S.**  
**Ruth A. Marx, D.D.S.**  
920-231-0060  
[wihlmdental.com](http://wihlmdental.com)  
[info@wihlmdental.com](mailto:info@wihlmdental.com)  
2530 West 9th Avenue  
Oshkosh, WI 54904  
~ Premier Family Dentistry

**GMS**  
**GARTMAN MECHANICAL SERVICES**  
*It's Hard To Stop A Trane*  
 Heating/Cooling • Plumbing  
 Water Heaters  
 520 W South Park • Oshkosh, WI  
 P: 920-231-5530  
 Gartmanmechanical.com

*We make it new.*  
 By VAN DYKE UPHOLSTERY  
 From residential to commercial we can do it all! Mention this ad and receive 20% off your fabric selection on your next project!  
 Call us today to schedule your appointment:  
 Abby Quinn- 920-688-2838  
 Abby@wemakeitnew.com  
 @wemakeitnew

**SMET**  
 CONSTRUCTION SERVICES  
 Commercial  
 Industrial  
 Construction  
 920.532.3828  
 www.smet.com

**the GroundsGuys**  
 Kelly Flanigan  
 Owner  
 920.410.5220  
 Full landscape, lawn maintenance  
 & snow removal services  
 appletonandoshkosh.owner@groundsguys.com  
 GroundsGuys.com

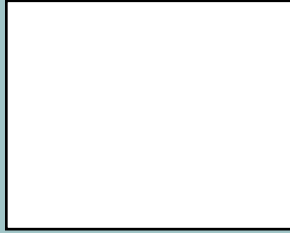
**BECK'S MEAT PROCESSING**  
 519 Clairville Rd • Oshkosh  
 589-2104  
 1003 N. Main St • Oshkosh  
 230-3393  
 Mon-Fri: 8-4<sup>30</sup> • Sat: 8-12

**SUPPORT OUR PARISH**

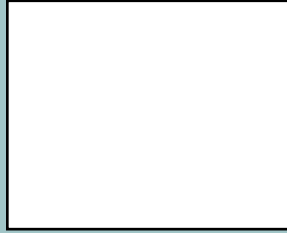
**OLSON**  
 LEGAL GROUP LLC  
 Honest, Effective Solutions  
 To schedule your free consultation call  
 (920) 230-7020  
 21 W New York Ave • Oshkosh, WI 54901  
 Business Planning • Estate Planning  
 Real Estate & More

**J&E FLOORS LLC**  
 (820)378-1311  
 • Porcelain • Ceramic  
 • Slate • Stone • Vinyl  
**PARISH MEMBER**  
**920-379-1311**

**Ganther** SINCE 1900  
 CONSTRUCTION | ARCHITECTURE  
*you got it.*  
 master planning, site analysis, funding assistance ... plus award-winning architecture and construction  
 420-426-4774 | Ganther.com



**catholicmatch**  
 Wisconsin  
  
 CatholicMatch.com/WI



**West Pointe Bank**  
 Member FDIC and West Pointe Bancshares, Inc.

**Dublin's Irish Pub** Take 10% off your purchase dine-in only  
 2070 W 9th Ave  
 dublinswi.com

**NEVER MISS OUR BULLETIN!**  
**SUBSCRIBE**  
 Have our bulletin emailed to you every week.  
 Visit [www.parishesonline.com](http://www.parishesonline.com)

**SUPPORT OUR ADVERTISERS!**

**WE'RE HIRING!**  
 AD SALES EXECUTIVES  
 BE YOURSELF.  
 BRING YOUR PASSION.  
 WORK WITH PURPOSE.  
 • Paid training  
 • Some travel  
 • Work-life balance  
 • Full-Time with benefits  
 • Serve your community  
 Contact us at [careers@4lpi.com](mailto:careers@4lpi.com) or [www.4lpi.com/careers](http://www.4lpi.com/careers)



**CMcP Realty, LLC**  
 511 W. Murdock Ave. Oshkosh, WI 54901  
 (920) 642-0980  
 chris@cmcprealty.com  
 cmcprealty.com  
 List With Chris It's That Simple!!!  
 Condo's, Homes, Multi-Family, Land/Lots  
 One Stop Realty Shop! Buy or Sell, Give me a Yell.



**QUANDT PLUMBING, LLC**  
 920-420-5185  
 www.QuandtPlumbingLLC.Com  
 MP#1013913  
 Members of St. Jude the Apostle  
 2909 Green Hill Ct., Ste D • Oshkosh

**LAKE-AIRE**  
 COMPLETE AUTO SERVICE  
**TECH-NET**  
 Professional AUTO SERVICE  
 2200 Montana St. • 920-231-1023

**Edward Jones**  
 Because every moment is for living.  
 Let's partner through all of it.  
  
**Jamie Neabling, AAMS™**  
 Financial Advisor  
 1425 S Washburn St  
 Oshkosh, WI 54904-8134  
 920-426-3669