

# Saint *the* JUDE APOSTLE



519 KNAPP STREET & 1225 OREGON STREET  
OSHKOSH, WISCONSIN



## 5TH SUNDAY OF LENT

"And when I am lifted up from the earth,  
I will draw everyone to myself." - Jn 12:32

Excerpts from the Lectionary for Mass ©2001, 1998, 1970 CCD. ©LPI

PARISH ADMINISTRATOR  
FR. LOUIS GOLAMARI

MASS SCHEDULE  
SATURDAY, 4:30 PM AT  
ST. VINCENT CHURCH

SUNDAY, 7:30 AM AT  
SACRED HEART CHURCH

SUNDAY, 9:30 AM AT  
ST. VINCENT CHURCH

SUNDAY, 11:00 AM AT  
SACRED HEART CHURCH

CONFESSIONS  
FIRST FRIDAY OF THE MONTH  
AFTER 7:30 AM MASS-SH  
SATURDAY, 3:30 PM-SV

PARISH OFFICE  
1025 W. 5TH AVENUE  
OSHKOSH, WI 54902  
HOURS: 8 AM-4:30 PM M-TH  
8 AM-2:30 PM FRI  
(920) 235-7412

WEBSITE  
[WWW.STJUDEOSHKOSH.ORG](http://WWW.STJUDEOSHKOSH.ORG)

March 17, 2024

*Live the Gospel, Share the Good News,  
Bring others to Christ - all for the glory and honor of God.*

### PASTORAL STAFF

Deacon.....Pat Gelhar  
Deacon.....Pete Cheskie  
Deacon.....Brad Gallenberg  
Care Coordinator.....Bertie Albright  
Adult Faith Formation Minister... Rob Saley  
Coordinator of Music .....Marshall Potter

### FAITH FORMATION STAFF

RE Coordinator.....Courtney Foster

### ADMINISTRATIVE STAFF

Business Manager ...Dcn. Brad Gallenberg  
Bookkeeper .....Jan Fendt

### SPECIAL EDUCATION RELIGION PROGRAM (SERV)

Tom Mentele.....426-5682

### PARISH COUNCIL

Ben Schneider, Chair  
Theresa Warwick, Vice-Chair  
Cindy Hackbarth, Secretary  
Jim Boyce                      Derek Dettlaff  
Jeff Paulick                     Patty Schaefer

### FINANCE COUNCIL

George Benz                    Nancy Hackbarth  
Sue Knobloch                  Brenda Morrell  
Dave Putzer                     Mike Scharff

### TRUSTEES

Derek Dettlaff .....Secretary  
Mike Scharff .....Treasurer

### LOURDES ACADEMY

President,  
Mr. John Dinegan .....426-3626  
Principal, (9-12)  
Mr. David Mikesell.....235-5670  
Principal (PreK-8)  
Mrs. Amy Geffers .....235-4060  
Assistant Principal, (PreK-8)  
Mr. Reed Tyriver.....235-4060

### OSHKOSH CATHOLIC CEMETERIES

Administrator  
Deacon Pat Gelhar .....(920) 379-2837  
email: office@stjudeoshkosh.org  
Sexton  
Jan Fendt.....(920) 235-7412  
email: jfendt@stjudeoshkosh.org



### ST. JUDE MASS SCHEDULE

Weekday  
Wednesday & Friday.....7:30 am (SH)  
Tuesday .....7:30 am (SV)  
\*\*With rosary starting at 7:00 am\*\*  
*If Oshkosh schools are closed due to the  
weather, we will not have morning Mass.*

PK-Children's Liturgy of the Word  
During Mass.....9:30 am (SV)

Spanish Mass (MBS, St. Peter Church, Oshkosh)  
1st and 3rd Sunday.....12:30 pm

### AREA PARISHES WEEKDAY MASS SCHEDULE

Most Blessed Sacrament  
St. Peter's Church  
Mon, Wed, Thurs, Fri, .....7:30 am  
St. Mary's Church  
Tuesday.....6:30 pm

St. Raphael  
Monday, Tuesday & Wednesday...8:00 am  
Thursday & Friday.....7:15 am

Mercy Hospital Mass  
1st and 3rd Wednesdays.....2:00 pm

### CITY-WIDE EUCHARISTIC ADORATION



**Monday-Friday  
8:00 am to 4:00 pm  
St. Peter Church  
435 High Ave.**

Starting **March 18** Eucharistic Adoration  
will located back at St. Mary's Church with  
hours being: **M-Th 9 am to 8 pm**

**Don't forget to set your  
hearing aid to "T Coil"  
setting.**



### SACRAMENT OF MARRIAGE

Couples planning marriage should contact  
the parish office at least six months to one  
year prior to their wedding date.

### BAPTISM

Baptisms are celebrated at the  
Saturday, 4:30 pm Mass and the  
Sunday, 11:00 am Mass, most weekends.  
(We do not have Baptisms during the  
season of Lent.)

A pre-baptismal class is required for all  
parents. Baptism preparation classes are  
held on the second Tuesday of the month  
for 1st time parents and on the third  
Tuesday of the month for parents  
baptizing their second, third...child. Class  
must be completed 4-6 weeks before the  
date of the baptism.

Parents are welcome to take the class  
before their baby is born also.  
Call the parish office for available dates  
and to register.

### MINISTRY OF THE SICK

Please notify the parish office if family  
members are seriously ill, confined  
or hospitalized. Anointing of the Sick will  
be administered on request.  
Communion will be brought to those  
who cannot attend Mass.

### RCIA- RITE OF CHRISTIAN INITIATION

The RCIA is a formational process that  
helps lead people to explore the Catholic  
faith through prayer, study and discussion.  
Please call the parish office.

### PARISH REGISTRATION

New members are invited to join by  
contacting the parish office.

### PASTORAL VISITS

Care Ministers are available for  
Pastoral Visits, if you or a loved one are in  
need of a listening presence or spiritual  
companionship. We can also bring Holy  
Communion to anyone who cannot get to  
Mass. Please let us know if you are home-  
bound or have recently moved into a care  
facility so that we may continue to meet  
your ministerial needs.

### PRAYER CHAIN REQUESTS

Call Jim or Paulette at: .....688-3237



## Rob'servations

Dear Friends—

As we enter this final week of Lent before Holy Week, Jesus reminds us of the need for repentance in our Sunday Gospel reading: “Amen, amen, I say to you, unless a grain of wheat falls to the ground and dies, it remains just a grain of wheat; but if it dies, it produces much fruit.” Jesus is talking symbolically about his own death and resurrection. He is the grain of wheat that dies on the cross and is buried in the tomb, then rises to new life to produce the fruit of grace in the lives of the faithful. But Jesus is not only talking about himself. He makes clear that he is also setting a standard for his followers: “Whoever loves his life loses it, and whoever hates his life in this world will preserve it for eternal life.” Repentance means a change of heart. We all need to learn to turn our hearts away from the things that keep us from God’s love, to “hate” them enough to truly change. We all need to become the grain of wheat that dies in order to produce fruit.

This is the great paradox of our faith which we focus on in an especially intense way as we head into our annual celebration of Jesus’ crucifixion and resurrection. What, practically, must we do to turn away from the world? Well, this is the spirit behind the Lenten disciplines of fasting, prayer, and almsgiving that we focus on each year during this season. When we deny ourselves, focus on God, and turn our attention to our suffering neighbor, we should become more attentive to the things that really matter.

Also, the call to turn away from the world can be a call to seek reconciliation with God. Jesus calls us this week to examine our hearts for the places where we have perhaps loved this life too much, where we have failed to reject our attachments to this world that keep us from drawing closer to heaven. As one writer put it, “Sin does not consist in wanting bad things: There *are* no bad things; all things are created by God. Sin consists in how you want *small* things. It is loving, for example, material possessions, which are good and created by God, at the expense of loving *God*.” Do we allow small things to get in the way of our love of God?

If we allow Jesus’ words to challenge us, we also can open ourselves up to his merciful love. Now is a good time to go to Confession to seek sacramental reconciliation, especially if you haven’t for awhile. (Remember that we are called to go to Confession at least once a year.) A special opportunity for this takes place this week on **Thursday evening, March 21**, when we will have our **City-Wide Lenten Reconciliation Service** at **St. Vincent’s, 6:30 pm**.

May God’s love be with you and your families as we enter this final week of Lent!

In Christ,  
Rob

*City-wide Reconciliations*

*St. Raphael* 830 S. Westhaven Thursday 14 MAR | 2 PM

*St. Vincent* 1225 Oregon St. Thursday 21 MAR | 6:30 PM







**LIVING THE EUCHARIST - SHARING THE GIFTS**


**2024 BISHOP'S APPEAL**

The Lord has blessed us in so many ways! Our parish family continues to reach out and be with people through the joys and challenges of life.

Thanks to the support of the Bishop's Appeal, the Church has found innovative and effective ways to connect with people and share the gifts.

**Please give today!**  
[www.catholicfoundationgb.org/give](http://www.catholicfoundationgb.org/give)

<b>St. Jude's 2024 Goal is</b>	<b>\$77,128</b>
<b>Current Registered Members</b>	<b>1538</b>
<b>Appeal Contributors to date</b>	<b>298</b>
<b>Amount collected to date</b>	<b>\$64,715</b>
<b>Percent</b>	<b>84%</b>



**ST. JUDE PARISH TOWNHALL MEETING**

MONDAY, MARCH 18 | 6:00 PM - LEANNAH HALL

SACRED HEART SCHOOL BUILDING WILL BE OPEN AT 5:00 PM

TOPICS OF DISCUSSION

THE FUTURE OF SACRED HEART SCHOOL  
 BUILDING THE FUTURE OF THE PARISH

**NATIONAL ARBOR DAY**  
**LIONS CLUB ROSE SALE**

This sale is a fundraiser to plant trees at **Red Arrow Park**.

Order cards are available in the church.  
**Pick up will be at St. Vincent Church on April 20, 2024 between 1 pm and 3 pm.**

Please contact Shirley Schmid at (920) 235-8138 with any questions.





MARCH 28

MARCH 29

MARCH 30

MARCH 31



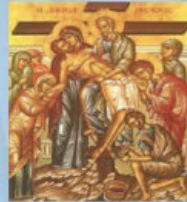
# EASTER TRIDUUM



## Holy Thursday

6:30 pm  
Sacred Heart

Adoration until  
10:00 pm

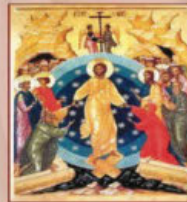


## Good Friday

12:30 pm  
St. Vincent

### Tenebrae Service

7:30 pm  
Sacred Heart



## Holy Saturday

8:00 pm  
St. Vincent



## Easter Sunday

7:30 am  
Sacred Heart

9:30 am  
St. Vincent

11:00 am  
Sacred Heart

### Community Comes together to Welcome Baby

Bella Medical Clinic is having a Baby Shower on Sunday April 14th, 2024 at Sunnyview Christian Church, 175 E County Road Y, Oshkosh. There will be guest speakers, followed by food, fellowship and fun.

Doors open at 1:45

Please RSVP by April 7th



See flyers at church entrances  
for more info or contact Bertie.

## SACRED HEART SCHOOL BUILDING



### COMMITTEE MEMBERS



\*FR. LOUIS GOLAMARI \*BEN SCHNEIDER, CHAIR \*MIKE SCHARFF, SECRETARY

\*GEORGE BENZ \*SALLY ROBL-BRUEX \*DEACON PAT \*FAYE GOSPODAREK

\*JAY RATCHMAN \*CHUCK AXELSEN \*KEN LARIE \*DEACON BRAD



# Cemetery Floral Arrangements



Sunday, April 28 in Leannah Hall  
7:00 am to Noon

Floral Saddles (\$35) and Cans (\$30)



We are having a hard time finding  
available flowers this year— if you are  
looking to have a redo please reach out  
to me soon so that your arrangement is  
done on time!

If you have any questions  
please call Debbie at (920) 231-3527

This is a fundraiser that has helped to  
purchase patio furniture, the gazebo, and  
numerous other things over the years!



## World's Poor Collection Envelopes at the Entrances



### Catholic Relief Services

pro-vides food for the hungry, housing for victims of natural disasters, educational opportunities for refugees displaced by war, pastoral ministries to travelers and migrants who lack consistent access to the sacramental life of a parish community. Please answer your call to help CRS be Jesus in disguise.

### The Campaign for Human Development

Your support for this collection helps essential employees advocate for safe and healthy workplaces. Please prayerfully consider how you can help CCHD this year. If you would like more information about the collection and the people it supports, visit [www.usccb.org/cchd](http://www.usccb.org/cchd) 25% of this collection remains in our Diocese to support local anti-poverty efforts.

### Peter's Pence

supports the charitable works of Pope Francis by reaching out to those suffering around the world. Their initiatives provide the Holy Father with the financial means to respond to those who are suffering from the results of war, oppression, natural disaster, and disease. It also supports the ongoing activities of the Holy See.

### Pastoral Solidarity Fund for the Church in Africa

supports the efforts of the Church throughout Africa to witness the Gospel through evangelization, pastoral ministry, and the reconciliation of neighbors. When you participate in the collection to support the Solidarity Fund, you join this work of building the peace—work to which we are all called. Prayerfully consider contributing to this collection to assist those living in poverty, both locally and globally in this challenging year of Covid-19.

## 2024-25 New Student Enrollment is open!

Visit [www.lourdes.today/apply](http://www.lourdes.today/apply) to learn  
more or begin the admission process.

For more information, contact Theresa Warwick  
at 920-426-6421 or [twarwick@lourdes.today](mailto:twarwick@lourdes.today)



[lourdes.today](http://lourdes.today)



## TOTUS TUUS

PARISH SUMMER CATECHETICAL PROGRAM

**St. Jude the Apostle**

### SAVE THE DATE

**JULY 7TH - 12TH**

Join us for a fun and faith-filled week! Learn about the Apostles Creed and the Glorious Mysteries of the rosary while growing in your relationship with the Lord. See you there!

DAY PROGRAM	NIGHT PROGRAM
• Monday - Friday	• Sunday - Thursday
• 9am-2:30pm	• 7-9pm
• Grades 1-6	• Dinner Provided




[www.totustusgreenbay.org](http://www.totustusgreenbay.org)



*He is Risen. Alleluia, Alleluia, Alleluia*

## FATHER CARR'S PLACE 2B EASTER SUNDAY DINNER

**SUNDAY MARCH 31, 2024**



**EASTER SUNDAY DINNER DELIVERY 10:30 - NOON**  
**ACCEPTING ORDERS NOW - (920) 231-2378**

**SAINT MOTHER TERESA CENTER DINE-IN NOON - 1:30**  
**NO RESERVATIONS NECESSARY**





**Cross Catholic  
OUTREACH**

*Delivering Food, Shelter and Hope to the Poorest of the Poor*



# WELLS OF SALVATION

**So far we have raised:  
\$9,661  
of our \$16,100 goal**

In rural Zambia, people walk for miles to hear Father George Banda celebrate Mass outdoors. Many of them can't even afford shoes. These are our brothers and sisters in Christ, and they are hurting. This Lent, we encourage you to give alms to the Wells of Salvation appeal to bring clean water, food, health, spiritual outreach, and much more to families in Zambia and Malawi.

**Please put donations, in a marked envelope,  
in offertory at Mass with checks made payable to:**

**St. Jude Parish**

**Prayers  
go HERE!**



## Our Goals—Three Pillars of Lent

- 1) **Almsgiving.** To raise \$16,096 to fund the drilling of two (2) wells in Africa.
- 2) **Prayer.** To offer our prayers & petitions. Prayers can be placed in the wells at both churches

- 3) **Fasting.** To build community involvement through dedicating ourselves to provide some form of abstaining (fasting) during our Lenten journey.





## COUNCIL 614— OUR LADY OF LOURDES

### Fifth Sunday of Lent

'Out of the depths I call to you O Lord: Lord hear my cry.  
Listen attentively to the sound of my pleading!'  
(Ps 129:1-2).

In this, the fifth Sunday of Lent, the Church invites us to turn our attention to the realities that are perhaps the most 'scandalous' in human experience, the death of a loved one. In this Gospel we see all those who are being supportive of Martha and Mary at the moment of their brother, Lazarus' death.

Previously called "Passion Sunday," this Fifth Sunday of Lent marks the beginning of Passiontide, a deeper time of Lent. This is the third Sunday of the scrutinies for the preparation of adult converts, and the final Sunday of Lent before the beginning of Holy Week. The Liturgy of the Word of this day speaks of re-creation, resurrection, and new life.

God Loves you!

Jay Schaefer—Grand Knight, Council 614  
kofc614@gmail.com  
—(920) 410-1284

## Lenten Evening Prayer



With  
Adoration  
and  
Benediction



~~3<sup>RD</sup>~~, ~~4<sup>TH</sup>~~, & 5<sup>TH</sup>  
SUNDAYS OF LENT  
(MARCH ~~3~~, ~~10~~, AND 17)

6:00–6:30 PM

SACRED HEART CHURCH



Join us in person, live on Facebook, or afterward  
on the St. Jude Youtube channel.

## Catholic Cemeteries of Oshkosh 2024 Spring Cleanup

A REMINDER THAT ALL DECORATIONS AND  
ARTICLES NEED TO BE REMOVED FROM THE  
CEMETERIES BY MARCH 31.

SPRING CLEANUP WILL BE STARTING IN APRIL.

AS AN INDIVIDUAL IT MAY NOT SEEM IMPORTANT  
TO HAVE DECORATIONS REMOVED IN A TIMELY  
MANNER. WHEN DEALING WITH THOUSANDS OF  
GRAVE SITES IT NOT ONLY MAKES THE TASK OF  
CLEANUP EASIER, BUT ALSO SAFER & LESS COSTLY!

RESPECTFULLY,  
DEACON PAT GELHAR  
ADMINISTRATOR

Catholic Cemeteries of  
Oshkosh, Inc.

## LENTEN PENNY WARS



*Benefitting Wells  
of Salvation*

### POSITIVE POINTS

- EACH PENNY = +1 POINT
- \$1 BILL = +100 POINTS
- \$5 BILL = +500 POINTS
- \$10 BILL = +1,000 POINTS

### NEGATIVE POINTS

- NICKEL = -5 POINTS
- DIME = -10 POINTS
- QUARTER = -25 POINTS

THROUGHOUT LENT, CONTAINERS FOR RELIGIOUS ED  
GRADE LEVELS WILL BE IN THE BACK OF EACH CHURCH  
FOR YOU TO CONTRIBUTE YOUR PENNIES!

WE ARE EXCITED TO BE JOINING OUR LARGER PARISH  
FAMILY BY DONATING THIS YEARS PENNY WARS  
FUNDS TO

**WELLS OF SALVATION**





# Qualifications of a Care Minister

If you are reading this perhaps God is calling you!  
*What is Care Ministry? How do I know if I am called?*  
Maybe you are called ...

- ♦ To preach, teach and proclaim God's word through an active faith life.
- ♦ To use your gifts to help someone in need in you own family
- ♦ To use your gifts to help someone in your parish family
- ♦ To listen to someone's story and be compassionate
- ♦ To do something different for God each day
- ♦ To be a Care Minister

*If you are interested in becoming a Care Minister or in sharing your talents in any capacity, first pray about it, then reflect on it, then discuss it with someone like Fr. Louis, our deacons, or call me!*

*God Bless you.  
Bertie Albright.*

*Care Minister and Outreach Coordinator*

*As always.... "whatever you do for the least of my people, so you do unto me" Matthew 25:40*



## CFM at St. Jude Parish

**2024 Theme:**

***"Families Protected and Prepared:  
Putting On the Armor of God"***



Families Protected and Prepared  
Putting on the Armor of God



**First meeting:  
Tuesday, March 19  
6:30 pm • Leannah Hall  
(After Soup & Stations)**



**Christian Family  
Movement**

**Make Friends ... Make Disciples ... Make a Difference!**



Sign up for CFM today!  
Scan the QR code, visit  
[stjudeoshkosh.org/cfm](http://stjudeoshkosh.org/cfm),  
or use a paper registration card  
(in churches and office).

**Not sure you want to register? Just attend the  
first meeting to see what CFM is all about!**

**All are welcome ... Whoever you are,  
you have a family!**

**Contact Rob Saley for more info:  
[rsaley@stjudeoshkosh.org](mailto:rsaley@stjudeoshkosh.org) (920) 235-7412**

## MASS INTENTIONS

### Saturday, March 16

4:30 pm (SV) †Barbara Knobloch  
†Pat & Chuck Penzenstadler  
†Becky Baehman

### Sunday, March 17

7:30 am (SH) †Patrick Scharff  
9:30 am (SV) †Joe & Donna Koelbl  
11:00 am (SH) St. Jude Parish

### Monday, March 18

No Mass

### Tuesday, March 19

7:30 am (SV) †Joseph Shelfhout

### Wednesday, March 20

7:30 am (SH) †Catherine Fendt

### Thursday, March 21

No Mass

### Friday, March 22

7:30 am (SH) †Russell & Louise Thompson,  
Kathy Stromske,  
Mary Moore & Tom Thompson

### Saturday, March 23

4:30 pm (SV) St. Jude Parish

### Sunday, March 24

7:30 am (SH) †Lilly Scharff  
†Catherine Fendt  
†Richard Peterson  
9:30 am (SV) †Don Schlicting  
11:00 am (SH) †Dennis Kohl

(SV)—St. Jude Parish, St Vincent Church  
(SH)—St. Jude Parish, Sacred Heart Church

## IN LOVING REMEMBRANCE

### The Sanctuary Candle Memorial

The Sanctuary Candle is burning this week in memory of

Tom Baier

Robert & Vivian DuPrey

## LITURGICAL ROLES FOR MARCH 23 & 24

### Lectors

4:30 pm (SV) C. Putzer, B. Campbell  
7:30 am (SH) D. Putzer, R. Walter  
9:30 am (SV) D. Dettlaff, J. Boyce  
11:00 am (SH) K. Warncke, L. Kroll

### Eucharistic Ministers

4:30 pm (SV) P. Baier, J. Beck, D. Dahlke  
7:30 am (SH) R. & N. Hackbarth  
9:30 am (SV) A. Nitz, P. LeBouton  
11:00 am (SH) Sr. Grace, B. Albright

### Servers

4:30 pm (SV) R. Buttke, Z. Buttke  
7:30 am (SH) M. Vandehey, **1 NEEDED**  
9:30 am (SV) H. Dettlaff, N. Dettlaff  
11:00 am (SH) A. Warncke, **1 NEEDED**

### Ushers

4:30 pm (SV) C. Baier, A. Sedlachek,  
S. Sturm, **1 NEEDED**  
7:30 am (SH) M. Marx, E. Scharff,  
M. Scharff, T. Suszek  
9:30 am (SV) J. Boyce, J. Boyce,  
W. Potratz, **1 NEEDED**  
11:00 am (SH) P. Pickart, B. Hollnagel,  
P. Augustine, **1 NEEDED**

### Musicians

4:30 pm (SV) M. Gallenberg, L. Gustke  
7:30 am (SH) K. Zellner, M. Potter  
9:30 am (SV) L. Waters, M. Potter  
11:00 am (SH) St. Jude Choir, M. Potter

### Sacristans

4:30 pm (SV) Deacon Brad  
7:30 am (SH) Nancy Hackbarth  
9:30 am (SV) Mary D'Angelo  
11:00 am (SH) Sr. Grace Donne

### Greeters

4:30 pm (SV) B. Dahlke, C. Beck  
7:30 am (SH) J. Fendt, **1 NEEDED**  
9:30 am (SV) F. Gospodarek, **1 NEEDED**  
11:00 am (SH) J. Kroll, **1 NEEDED**

### Church Openers

4:30 pm (SV) Clarice Warnke  
7:30 am (SH) Joe Drexler  
9:30 am (SV) Mary Putzer

## WEEKLY COLLECTION FOR MARCH 9 & 10

Envelopes	\$8,996.22
Loose	\$797.08
WeShare	\$870.74
Direct	\$323.00
Other	\$0.00
<b>Total</b>	<b>\$10,987.04</b>
Budget	\$13,461.54

## WEEKLY CALENDAR

### Sunday, March 17

6:00 pm Sung Evening Prayer (SH)

### Tuesday, March 19

8:00 am Perpetual Help Devotion (SV)  
1:00 pm Book Discussion (PC)  
1:30 pm Legion of Mary (PC)  
4:00 pm Fr. Carr Meals (Place 2B)  
5:30 pm Soup & Stations (SH/LH)

### Wednesday, March 20

5:30 am TMIY (LH)  
6:00 pm Elem/MS RE (SVS)  
6:00 pm Symbolon (HR)

### Thursday, March 21

9:00 am Book Discussion (PC)  
1:00 pm Marian Prayer (SH)

### Friday, March 22

12:15 pm Soup & Stations (SV/HR)

HR—Heritage Room (St. Vincent site)  
BH—Bastian Hall (St. Vincent site)  
SV—St. Vincent Church  
SH—Sacred Heart Church  
LH—Leannah Hall (Sacred Heart site)  
PC—Parish Center (Office Building)  
SVS—St. Vincent School Building

## COMMUNION TO SHUT-INS

March 17 Don Bruex  
March 24 Judy Bannow  
March 31 Sue Knobloch  
April 7 John Beck

## READINGS FOR THE WEEK

### Sunday, March 17

Jer 31:31-34/Ps 51:3-4, 12-13, 14-15  
(12a)/Heb 5:7-9/Jn 12:20-3

### Monday, March 18

Dn 13:1-9, 15-17, 19-30, 33-62 or 13:41c  
-62/Ps 23:1-3a, 3b-4, 5, 6/Jn 8:1-1

### Tuesday, March 19

2 Sm 7:4-5a, 12-14a, 16/Ps 89:2-3, 4-5,  
27 and 29/Rom 4:13, 16-18, 22/Mt 1:16,  
18-21, 24a or Lk 2:41-51a

### Wednesday, March 20

Dn 3:14-20, 91-92, 95/Dn 3:52, 53, 54,  
55, 56/Jn 8:31-42

### Thursday, March 21

Gn 17:3-9/Ps 105:4-5, 6-7, 8-9/Jn 8:51-59

### Friday, March 22

Jer 20:10-13/Ps 18:2-3a, 3bc-4, 5-6, 7/Jn  
10:31-42

### Saturday, March 23

Ez 37:21-28/Jer 31:10, 11-12abcd, 13/Jn  
11:45-56

### Sunday, March 24

Mk 11:1-10 or Jn 12:12-16/Is 50:4-7/Ps  
22:8-9, 17-18, 19-20, 23-24 (2a)/Phil 2:6  
-11/Mk 14:1-15:4



**KONRAD-BEHLMAN**  
FUNERAL HOME

"Serving all Faiths" in Oshkosh  
and the Fox Valley since 1875

Specializing in Retirement Planning, Medicaid, Spend  
Down and Burial Space Protection of Assets.

Two Oshkosh locations to serve You better!  
(920) 231-1510    
[www.konrad-behlman.com](http://www.konrad-behlman.com)

**KUNDE**  
MEMORIALS, Inc.

Granite - Marble - Bronze

Quality Workmanship  
[www.kundememorials.com](http://www.kundememorials.com)  
1690 Ohio St. 235-5822

  
LANDSCAPE SOLUTIONS  
Landscape Design And Installation  
[www.landscapesolutionswi.com](http://www.landscapesolutionswi.com)  
2979 W. 20th Ave., Oshkosh, WI 54904  
**920-420-8054**


**GREEN BAY**  
DIOCESAN MUSEUM  
At St. Francis Xavier Cathedral

140 So. Madison St.  
Green Bay, WI 54301

Tours Available  
Phone **920-432-4348**

  
SOCIETY OF ST. VINCENT DE PAUL

**HELPLINE: 729-4571**  
Short Term Help

  
LANDSCAPE & FIREPLACE

1990 W. Snell Rd., Oshkosh  
New Hwy 45 just North of Hwy 41  
(920) 231-1994  
[www.zillges.com](http://www.zillges.com)

**SHORT**  
STAFFED?

Place an ad here to find  
new local talent for  
your business.

**IF YOU LIVE ALONE**

**MDMedAlert!**™ As Low As **\$19<sup>95</sup>** /mo.

✓ Ambulance ✓ Police/Fire  
✓ Family/Friends ✓ GPS & Fall Alert

**CALL NOW! 800.808.9294**  
  
[md-medalert.com](http://md-medalert.com)


  
**LOURDES**  
ACADEMY

Prepared for College. Prepared for Good.™  
Faith-filled PreK-12 education

Call **920.426.6421**  
for a tour  
or visit [www.Lourdes.today](http://www.Lourdes.today)

  
526 W. 11th Ave.  
Oshkosh, WI 54902  
(920) 233-8334  
Fax 233-8364

**POESCHL PRINTING**  
COMPANY, INC.

  
**CALL**  
**800-950-9952**

  
**Gomach Plumbing** LLC  
Residential • Commercial  
New Construction • Remodels • Repairs • Service  
712 Ohio St., Ste. B, Oshkosh  
Serving Oshkosh and the Fox Valley  
Call for a FREE Quote!  
920-420-7815

**Place Your Ad Here and**  
**Support our Parish!**

Instantly create and  
purchase an ad with

**AD CREATOR STUDIO**

  
**4lpi.com/adcreator**



  
Voted Best  
Roofing Contractor  
14 Years Running

  
**(920) 426-4008**  
[hickeyroofing@msn.com](mailto:hickeyroofing@msn.com)

  
**SUPPORT**  
**OUR PARISH**



Local business ads  
sponsor the printing of  
our bulletin.  
**4lpi.com/adcreator**

**G REINKE & CO**  
Quality Service Since 1908  
Monuments • Markers • Mausoleums  
Laser etching of scenes and  
photos on granite or glass  
[www.greinkeandco.com](http://www.greinkeandco.com)  
920-231-0650 800-378-9073  
After Hours Call 233-6260  
900 S Main **920-231-0650**

**SUPPORT**  
**OUR**  
**ADVERTISERS!**

**ADT-Monitored Home Security**  
Get 24-Hour Protection From a Name You Can Trust

- Burglary
- Flood Detection
- Fire Safety
- Carbon Monoxide

  
  
**833-287-3502**

**LET'S GROW**  
**YOUR BUSINESS**

Place Your Ad Here  
and Support Our Parish!

  
**CONTACT ME**  
**Janet Axtell**

[jaxtell@4LPi.com](mailto:jaxtell@4LPi.com)  
(800) 950-9952 x2539

**Shaun P. McDonald, M.D.**  
Board Certified Dermatologist

  
515 S. Washburn St., Ste. 204  
Oshkosh, WI 54904  
920 232-1130 fax: 920 232-1175  
[www.foxvalleydermatology.com](http://www.foxvalleydermatology.com)

**WE APPRECIATE OUR**  
**ADVERTISERS!**

  
**FREE**  
**AD**  
**DESIGN**  
with  
purchase  
of this  
space

**CALL**  
**800-950-9952**

  
Marsh Family Eyecare  
(920) 426-2020  
Now Open at 2510 W. 9th Ave.

**Fiss & Bills - Poklasny**  
Funeral Homes & Crematory  
Serving All Faiths Since 1904

865 S. Westhaven Dr.  
870 W. South Park Ave.  
**920-235-1170**  
[fissbillspoklasnyfuneralhome.com](http://fissbillspoklasnyfuneralhome.com)

**W I H L M**  
  
**d e n t a l**

  
**Michelle A. Wihlm, D.D.S.**  
Ruth A. Marx, D.D.S.  
920-231-0060  
[wihlmdental.com](http://wihlmdental.com)  
[info@wihlmdental.com](mailto:info@wihlmdental.com)  
2530 West 9th Avenue  
Oshkosh, WI 54904  
~ Premier Family Dentistry



## K and C PEST CONTROL

4711 County Rd GG,  
Oshkosh  
920-582-9000  
www.kandcpestcontrol.com

*We make it new*  
by VAN DYNE UPHOLSTERY



From residential to commercial we can do it all! Mention this ad and receive 20% off your fabric selection on your next project!

Call us today to schedule your appointment:  
Abby Quinn: 920-688-2838  
Sales Associate  
Abby@wemakeitnew.com

@vandyneupholstery @we.make.it.new\_vdu



**FREE  
AD  
DESIGN**

with  
purchase  
of this  
space

**CALL  
800-950-9952**

**the GroundsGuys** Kelly Flanigan  
Owner  
920.410.5220

**Full landscape, lawn maintenance  
& snow removal services**

appletonandoshkosh.owner@groundsguys.com  
GroundsGuys.com

## BECK'S MEAT PROCESSING

519 Clairville Rd • Oshkosh  
589-2104  
1003 N. Main St • Oshkosh  
230-3393  
Mon-Fri: 8-4<sup>30</sup> • Sat: 8-12

**health  
markets**

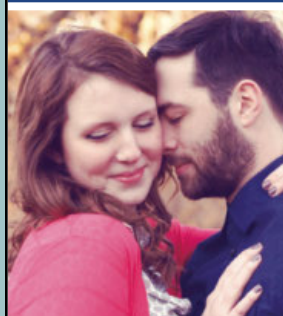
The Smarter Way to Shop...

- Health • Medicare
- Life Insurance • Supplemental
- Long-Term Care • Retirement

Call us today to schedule your FREE QUOTE!  
(920) 420-9399

Matthew J Melcher - Licensed Insurance Agent

## catholicmatch® Wisconsin



CatholicMatch.com/WI

**WE APPRECIATE OUR  
ADVERTISERS!**

They allow us to print  
this bulletin. Thank you!


**NEVER MISS OUR BULLETIN!**

**SUBSCRIBE**

Have our bulletin  
emailed to you  
every week.



Visit [www.parishesonline.com](http://www.parishesonline.com)



**West Pointe Bank**

Member FDIC and  
West Pointe Bancshares, Inc.

# SUPPORT OUR ADVERTISERS!

## WE'RE HIRING!

AD SALES EXECUTIVES

BE YOURSELF.  
BRING YOUR PASSION.  
WORK WITH PURPOSE.

- Paid training
- Some travel
- Work-life balance
- Full-Time with benefits
- Serve your community



Contact us at  
careers@4lpi.com or  
www.4lpi.com/careers

**CMcP Realty, LLC**

List With Chris  
It's That Simple!!!

Condo's, Homes, Multi-Family, Land/Lots  
One Stop Realty Shop! Buy or Sell, Give me a Yell.

511 W. Murdock Ave.  
Oshkosh, WI 54901  
(920) 642-0980  
chris@cmcprealty.com  
cmcprealty.com



Chris  
McPhetridge

**QUANDT  
PLUMBING, LLC**

920-420-5185  
www.QuandtPlumbingLLC.com  
MP#1013913  
Members of St. Jude the Apostle  
2909 Green Hill Ct., Ste D • Oshkosh

**LAKE-AIRE**  
COMPLETE AUTO SERVICE

**TECH-NET**  
Professional  
AUTO SERVICE

2200 Montana St. • 920-231-1023

**Edward Jones**

Because every  
moment is  
for living.

Let's partner through all of it.



Jamie Neabling, AAMS™  
Financial Advisor  
1425 S Washburn St  
Oshkosh, WI 54904-8134  
920-426-3669



For ad info. call 1-800-950-9952 • [www.4lpi.com](http://www.4lpi.com)

St. Jude the Apostle, Oshkosh, WI

A 4C 01-0954