



519 KNAPP STREET & 1225 OREGON STREET
OSHKOSH, WISCONSIN

FIRST SUNDAY OF LENT

INTO THE DESERT.

MARK 1:13



PARISH ADMINISTRATOR
FR. LOUIS GOLAMARI

MASS SCHEDULE
SATURDAY, 4:30 PM AT
ST. VINCENT CHURCH

SUNDAY, 7:30 AM AT
SACRED HEART CHURCH

SUNDAY, 9:30 AM AT
ST. VINCENT CHURCH

SUNDAY, 11:00 AM AT
SACRED HEART CHURCH

CONFESSIONS
FIRST FRIDAY OF THE MONTH
AFTER 7:30 AM MASS-SH
SATURDAY, 3:30 PM-SV

PARISH OFFICE
1025 W. 5TH AVENUE
OSHKOSH, WI 54902
HOURS: 8 AM-4:30 PM M-TH
8 AM-2:30 PM FRI
(920) 235-7412

WEBSITE
WWW.STJUDEOSHKOSH.ORG

February 18, 2024

Live the Gospel, Share the Good News,
Bring others to Christ - all for the glory and honor of God.

PASTORAL STAFF

Deacon.....Pat Gelhar
Deacon.....Pete Cheskie
Deacon.....Brad Gallenberg
Care Coordinator.....Bertie Albright
Adult Faith Formation Minister...Rob Saley
Coordinator of MusicMarshall Potter

FAITH FORMATION STAFF

RE Coordinator.....Courtney Foster

ADMINISTRATIVE STAFF

Business Manager ...Dcn. Brad Gallenberg
BookkeeperJan Fendt

SPECIAL EDUCATION RELIGION PROGRAM (SERV)

Tom Mentele.....426-5682

PARISH COUNCIL

Ben Schneider, Chair
Theresa Warwick, Vice-Chair
Cindy Hackbarth, Secretary
Jim Boyce Derek Dettlaff
Jeff Paulick Patty Schaefer

FINANCE COUNCIL

George Benz Nancy Hackbarth
Sue Knobloch Brenda Morrell
Dave Putzer Mike Scharff

TRUSTEES

Derek DettlaffSecretary
Mike ScharffTreasurer

LOURDES ACADEMY

President,
Mr. John Dinegan426-3626
Principal, (9-12)
Mr. David Mikesell.....235-5670
Principal (PreK-8)
Mrs. Amy Geffers235-4060
Assistant Principal, (PreK-8)
Mr. Reed Tyriver.....235-4060

OSHKOSH CATHOLIC CEMETERIES

Administrator
Deacon Pat Gelhar(920) 379-2837
email: office@stjudeoshkosh.org
Sexton
Jan Fendt.....(920) 235-7412
email: jfendt@stjudeoshkosh.org



ST. JUDE MASS SCHEDULE

Weekday
Wednesday & Friday.....7:30 am (SH)
Tuesday7:30 am (SV)
With rosary starting at 7:00 am
*If Oshkosh schools are closed due to the
weather, we will not have morning Mass.*

PK-Children's Liturgy of the Word
During Mass.....9:30 am (SV)

Spanish Mass (MBS, St. Peter Church, Oshkosh)
1st and 3rd Sunday.....12:30 pm

AREA PARISHES WEEKDAY MASS SCHEDULE

Most Blessed Sacrament
St. Peter's Church
Mon, Wed, Thurs, Fri,7:30 am
St. Mary's Church
Tuesday.....6:30 pm

St. Raphael
Monday, Tuesday & Wednesday...8:00 am
Thursday & Friday.....7:15 am

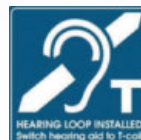
Mercy Hospital Mass
1st and 3rd Wednesdays.....2:00 pm

CITY-WIDE EUCCHARISTIC ADORATION



Monday-Friday
8:00 am to 4:00 pm
St. Peter Church
435 High Ave.

Don't forget to set your
hearing aid to "T Coil"
setting.



SACRAMENT OF MARRIAGE

Couples planning marriage should contact
the parish office at least six months to one
year prior to their wedding date.

BAPTISM

Baptisms are celebrated at the
Saturday, 4:30 pm Mass and the
Sunday, 11:00 am Mass, most weekends.
(We do not have Baptisms during the
season of Lent.)

A pre-baptismal class is required for all
parents. Baptism preparation classes are
held on the second Tuesday of the month
for 1st time parents and on the third
Tuesday of the month for parents
baptizing their second, third...child. Class
must be completed 4-6 weeks before the
date of the baptism.

Parents are welcome to take the class
before their baby is born also.
Call the parish office for available dates
and to register.

MINISTRY OF THE SICK

Please notify the parish office if family
members are seriously ill, confined
or hospitalized. Anointing of the Sick will
be administered on request.
Communion will be brought to those
who cannot attend Mass.

RCIA- RITE OF CHRISTIAN INITIATION

The RCIA is a formational process that
helps lead people to explore the Catholic
faith through prayer, study and discussion.
Please call the parish office.

PARISH REGISTRATION

New members are invited to join by
contacting the parish office.

PASTORAL VISITS

Care Ministers are available for
Pastoral Visits, if you or a loved one are in
need of a listening presence or spiritual
companionship. We can also bring Holy
Communion to anyone who cannot get to
Mass. Please let us know if you are home-
bound or have recently moved into a care
facility so that we may continue to meet
your ministerial needs.

PRAYER CHAIN REQUESTS

Call Jim or Paulette at:688-3237

R'observations

Dear Friends—

Here we are at the beginning of another Lent, a season where we refocus on **almsgiving, prayer, and fasting**. A few days ago on Ash Wednesday, we heard the Gospel reading from the very heart of the Sermon on the Mount, where Jesus urges us to give alms, to pray, and to fast out of devotion to our heavenly Father, not to win praise from others.

For Jesus, as for Jewish tradition before him, these are the **three primary ways we cultivate our relationship with God**. Of these three, almsgiving can seem the strangest. Why should giving money to the poor have anything to do with God? Is almsgiving really even needed in a modern welfare state? Can't the government and nonprofits do a better job of providing for the needy than my personal giving ever could?

These sorts of questions, however, overlook the spiritual value of almsgiving. The Church urges us to practice almsgiving, especially during Lent, not to solve the problem of poverty, but for the sake of our own spiritual development. There are three main aspects to the spiritual meaning of almsgiving:

1. **Repaying the debt of sin.** One of Solomon's Proverbs states, "The treasures of wickedness provide no benefit, but almsgiving delivers from death" (Prov 10:2). When we give to the poor, it is as if we are making a deposit in the Bank of God, and paying off the debts we have incurred through our sins.
2. **Encountering Christ in the poor.** Mother Teresa famously said that her service to the poor of Calcutta was really service to "Jesus in disguise." Jesus tells us that whatever we do for the least of his brothers and sisters, we do for him (Mt 25:40). When we give alms, especially in a personal encounter, we have an opportunity to meet and recognize Jesus' mysterious presence.
3. **The imitation of God.** God created the world out of pure generosity, and, out of superabundant love, sent his Son to suffer and die for the forgiveness of sins. When we

freely give money to the poor that we could have invested for an earthly return, we come to more deeply know what the generosity God's love really means.

This Lent our parish invites you to give alms through the Wells of Salvation fundraiser, the Penny Wars for our Religious Education students, or the Rice Bowls for Catholic Relief Services. Or you might prefer to take advantage of the many other opportunities in our community and beyond to practice almsgiving. Whatever form it takes, let us take time this Lent to consider how we can practice almsgiving in a spiritually fruitful way.

In Christ,
Rob

PS: At the beginning of Advent, as you know, we added a couple prayers to the Mass, the *Anima Christi* and the St. Michael Prayer. Beginning this Sunday, the First Sunday of Lent, we are making a couple small changes to how we pray these prayers:

- Now that it is familiar to us, we will no longer pray the *Anima Christi* aloud together as a congregation, but will invite everyone to offer this prayer privately when you return to your pew after receiving communion.
- Beginning this Sunday, Bishop Ricken has directed that all parishes in the Green Bay Diocese are to pray the St. Michael Prayer at the end of every Mass. (See his letter in this bulletin.) In order to have uniformity with the other parishes, we will be using the translation provided by our diocese. The prayer can still be found in the back of the *Breaking Bread* books, and there are prayer cards you can take home to help you learn the slightly different wording.

OUR PARISHIONERS

Rest in Peace



Together we join in prayer for
Judith Abitz & Hope Marin
who recently passed away and for their
families. May family and friends find peace
knowing that their loved one now rests with God.



2024 BISHOP'S APPEAL

LIVING THE EUCHARIST • SHARING THE GIFTS

The Lord has blessed us in so many ways! Our parish family continues to reach out and be with people through the joys and challenges of life.

Thanks to the support of the Bishop's Appeal, the Church has found innovative and effective ways to connect with people and share the gifts.

Please give today!

www.catholicfoundationgb.org/give

St. Jude's 2024 Goal is	\$77,128
Current Registered Members	1538
Appeal Contributors to date	36
Amount collected to date	\$17,780
Percent	23%

CBC BLOOD DRIVE

Our parish will host its next blood drive on

Thursday, February 22,
from 2:00 to 5:30 pm
in Leannah Hall

Walk-ins are welcome but reservations are preferred.
Schedule your blood donation today!

Visit donate.communityblood.org to reserve a time,
or call Rob at the Parish Office, (920) 235-7412.



**THE COMMUNITY
BLOOD CENTER**
connecting lives | sharing life



WELLS OF SALVATION



Jesus spent 40 days and 40 nights in the desert. Can you imagine how thirsty he must've felt? Sadly, even today, many girls like Miriam have no access to clean water. This Lent, join our parish family to bring clean water to our brothers and sisters in Zambia and Malawi.



Our Goals—Three Pillars of Lent

- 1) Almsgiving.** To raise \$16,096 to fund the drilling of two wells in Africa.
- 2) Prayer.** To offer our prayers & petitions. Prayers can be placed in the wells at both churches
- 3) Fasting.** To build community involvement through dedicating ourselves to provide some form of abstaining (fasting) during our Lenten journey.

ONLINE BIBLE STUDY

Read and discuss the coming Sunday's readings!

THURSDAYS OF LENT BEGINS FEBRUARY 15

Option 1: 9:30-10:30 am

Option 2: 8:00-9:00 pm

Contact Rob Saley for more info, or to register:
(920) 235-7412 • rsaley@stjudeoshkosh.org



TUESDAYS—STARTING FEBRUARY 20

STATIONS AT 5:30 PM SACRED HEART

SOUP SUPPER AT 6:00 PM IN LEANNAH HALL

Soup & Stations

Free child care on Tuesday nights!

FRIDAYS—STARTING FEBRUARY 16

STATIONS AT 12:15 PM ST. VINCENT

SOUP LUNCH AT 12:45 PM IN BASTIAN HALL

PLEASE CALL THE PARISH OFFICE

AT 235-7412

TO SIGN UP TO BRING

BREAD OR SOUP!

SENIOR YOUNG AT HEART

Travel abroad and never have to leave
your chair as we journey around the
world with Connie Schuster!

Donations will be
going to Father
Carr's Place 2B

Wednesday, February 21

11:30 am

Leannah Hall

MONTHLY POTLUCK



COUNCIL 614— OUR LADY OF LOURDES The First Sunday of Lent

Hopefully Lent can be less of a time to feel like I need to earn God's love, and more of a time to believe in his promises. Our discipline and sacrifice are but a means to clear our lives of the things that prevent us from loving God with all our heart. To get rid of the things that keep us from imitating the example of our loving Savior and to believe in the Gospel. When we believe in the Gospel we are drawn to live in covenant with God, and so we grow in our capacity to accept his love and imitate Christ's example.

Fr. Jacob Carlin

Heavenly Father,
help us to trust in your promises,
help us to live in the Covenant, help to believe in the Gospel.

God Loves you!

Jay Schaefer—Grand Knight, Council 614
kofc614@gmail.com
—(920) 410-1284

LENTEN PENNY WARS



POSITIVE POINTS

- EACH PENNY = +1 POINT
- \$1 BILL = +100 POINTS
- \$5 BILL = +500 POINTS
- \$10 BILL = +1,000 POINTS

NEGATIVE POINTS

- NICKEL = -5 POINTS
- DIME = -10 POINTS
- QUARTER = -25 POINTS

THROUGHOUT LENT, CONTAINERS FOR RELIGIOUS ED
GRADE LEVELS WILL BE IN THE BACK OF EACH CHURCH
FOR YOU TO CONTRIBUTE YOUR PENNIES!

IN THE SPIRIT OF FRIENDLY COMPETITION, THIS IS HOW
THE PENNY WARS OPERATE: GAIN POINTS BY ADDING
PENNIES & BILLS TO A CONTAINER OR LOWER POINTS BY
ADDING SILVER COINS.

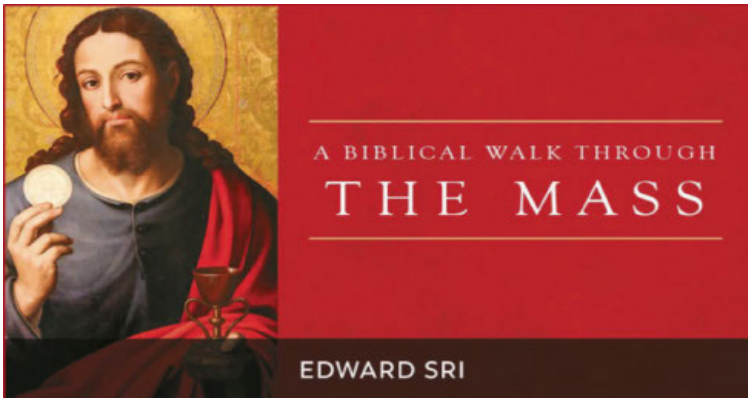
City-wide Reconciliations

St. Raphael Thursday 14 MAR | 2 PM
830 S. Westhaven

St. Vincent Tuesday 21 MAR | 6:30 PM
1225 Oregon St.

Our 1st Communicants enjoyed selecting Bread Prayer Partners during Mass.

Even if you weren't one of the lucky ones to receive a loaf of bread please pray for these young students as they prepare to receive the Most Precious Body of Jesus in the Eucharist!



LENTEN BIBLE STUDY

A Biblical Walk Through the Mass by Edward Sri

Starts February 19 • Ends March 18

**Mondays, 8:30–10:00 am
Leannah Hall**

\$25 (for workbook)

The words, the gestures, and the rituals of the Mass are rich in meaning. Everything we say and do in the Liturgy is steeped in biblical language. **A Biblical Walk Through the Mass** explores the extraordinary biblical roots of the Liturgy and reveals what it all means and why it all matters. This fascinating tour of the Mass will renew your faith and deepen your love for and devotion to the Holy Eucharist.

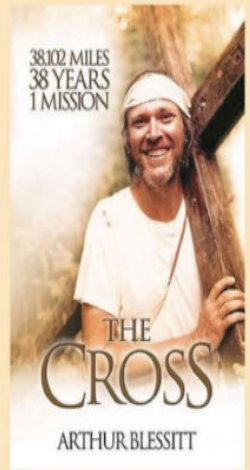
To register, or for more info, contact Rob Saley:
(920) 235-7412 • rsaley@stjudeoshkosh.org

SPRING BOOK DISCUSSION

The Cross By Arthur Blessitt

**Tuesdays, 1:00-2:30 pm
Begins March 5 • \$6**

Join us this March for a discussion of Arthur Blessitt's memoir *The Cross*. Arthur Blessitt started walking with a twelve-foot cross on December 25, 1969 and has successfully carried a large wooden cross into every nation and major island group of the world. On May 17, 2008, Arthur walked his 38,102nd mile in Zanzibar, off of the coast of Tanzania, completing a journey that began in 1969. This book reads like a travelogue as you journey with Arthur in country after country.



To register or for more information, contact Rob at the Parish Office: (920) 235-7412 • rsaley@stjudeoshkosh.org

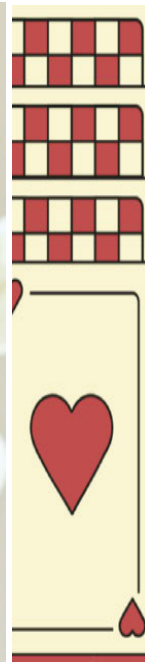
Easter Flowers

REMEMBER LOVED ONES, HONOR FRIENDS,
& OFFER THANKSGIVING

TRADITIONALLY FLOWERS ARE OFFERED IN
MEMORY OF A DECEASED LOVE ONE. PLEASE
RETURN YOUR CONTRIBUTION AND
INFORMATION BY MONDAY, MARCH 25

From: _____

In Memory of: _____



CARD GROUP

START AT 6PM • END AT 8 PM • LOADS OF FUN!

19
FEBRUARY

**LEANNAH
HALL**

**CRIBBAGE
3/13
SHEEPSHEAD**



Pastoral Instruction on use of the prayer to St. Michael the Archangel in the Liturgy

Awake from your Slumber

One of the great tragedies of our day is our state of constant busyness. As individuals and families, we are in a never-ending whirlwind of activity. From the moment we wake up in the morning until we prepare for bed at night, we are constantly running from activity to activity. Only to start again the next day. In our efforts to keep up with this race, we often lose sight of God – turning our eyes away from He who is our strength and our peace.

While we may be tempted to believe that constant busyness is harmless, and even a normal part of life, we must recognize the effects it is having on our spiritual life – many of us are living in a state of spiritual slumber. In our present day, the Enemy is using our constant state of preoccupation to distract us from the war he is waging against our souls and the souls of those we love. As we carry on in the hustle and bustle of life, the enemy is attacking us as he works to incite chaos through a culture of confusion, doubt, and fear.

When we lose sight of God and start to rely on our own abilities and talents, the enemy, Satan, uses the opportunity to tempt us to move further from God and toward sin. Satan is the father of lies. He seeks to kill and destroy all that is good. He lures us with false promises and hopes that never materialize. When we follow him into sin, we are only left with loneliness, alienation and hopelessness. The fruits of sin are all too evident in our world today. Poverty, racism, violence, wars, genocide and so many other social ills are becoming fixtures in our daily lives, locally and worldwide.

As pastors, parents and all baptized Catholics, we have a responsibility to heed St. Paul's call to awake from our slumber (Romans 13: 11) and put on the armor of God (Ephesians 6:12) to stand firm in our faith against the attacks of the evil one who is intent on destroying the Christian faith.



History of the St. Michael the Archangel Prayer

Around the year 1886, Pope Leo XIII had a vision of the spiritual warfare taking place in the time in which he lived. As he was concluding the celebration of the Mass, he was struck by fear at a vision of the demonic attacks to be carried out against God's people. The encounter had such an impact on the Holy Father that he was moved immediately to pen the words to the prayer so many of us have come to love – the St. Michael the Archangel Prayer. The prayer to St. Michael the Archangel is a powerful plea for the Archangel's intercession. As we read in Scripture, we seek the aid of the one who was chosen by God as protector of the Church and victorious warrior against the evil one.



Be Shielded in Battle – Pray to St. Michael the Archangel

We are on the battlefield facing attacks that seek to destroy us by robbing our children of their innocence, provoking doubt in our young people, inciting fear in the hearts of adults, stirring division in Christian marriages and causing division in the Church. This time of spiritual warfare demands that we take our stand against the evil one by invoking the intercession of St. Michael the Archangel.

Be not afraid, however! God never leaves His children defenseless – God sent His Son into the world to save us. He has also appointed angels in heaven to fight for us! We are not alone in this struggle against the evil one. The Lord Jesus, and His army of angels – particularly his chief warrior St. Michael the Archangel – go before us in battle.

As the family of God and in your own families, let us turn to St. Michael the Archangel in prayer. In asking for this powerful saint's intercession, we place our families and congregations under his protection as we trust in the victory to come through the saving power of God. We seek in prayer the protection of all marriages and families which are under the attack of the enemy. We also intercede for the universal Church, the Pope and

the Bishops, and for our own Bishop, priests and deacons in the Diocese of Green Bay.

St. Michael the Archangel, Pray for us!

How this is to be implemented - Praying the St. Michael Prayer at the conclusion of the Mass

We take all our prayers, intercessions and needs and trustingly place them in our loving Father's care. The attacks of the powers of darkness against the Pope, bishops and priests, the Church herself, parishes, marriages and families (the domestic church), warrant the call for all the spiritual weapons necessary for protection against the evil forces threatening the very fiber of our society. In her wisdom, the Church has always looked to the Saints to intercede for us with the Father. The need for the protection and intercession of St. Michael is greater now than in any other time in modern history.

Therefore, as Successor of the Apostles and Bishop of Green Bay, I direct that, beginning with the weekend of the First Sunday of Lent, February 17-18, in every parish, mission, chapel, campus ministry, and religious institution, that the St. Michael prayer be prayed publicly after Mass (after the final dismissal) and before the closing hymn. The prayer is to be prayed with only a simple invitation to join in praying the Prayer of St. Michael for protection. I further direct that in parishes where the Prayer is currently prayed at other times during Mass, that, as a sign of a unity, the Prayer to St. Michael is prayed after Mass as directed above. I envision this to be prayed perpetually within the Diocese of Green Bay.

Prayer cards, in both English and Spanish, will be distributed to parishes to be placed in the pew for the use in praying the prayer.

Pastors are encouraged to use this Pastoral Instruction along with Catechetical materials which will be provided to assist in the catechesis of the faithful.



MASS INTENTIONS

Saturday, February 17

4:30 pm (SV) †Marilyn Metzler Symmonds
 †Patricia Nielsen &
 Jerry Neumueller
 †Denise Petzold

Sunday, February 18

7:30 am (SH) †Earl Walsh
 9:30 am (SV) †Barbara Kasuboski
 11:00 am (SH) St. Jude Parish

Monday, February 19

No Mass

Tuesday, February 20

7:30 am (SV) †Phil Hubertus

Wednesday, February 21

7:30 am (SH) †Cyril Wallintin

Thursday, February 22

No Mass

Friday, February 23

7:30 am (SH) †Albert Griedl

Saturday, February 24

4:30 pm (SV) St. Jude Parish

Sunday, February 25

7:30 am (SH) †James Marx
 †LeRoy & Lucile Kinderman
 9:30 am (SV) †Bob Getchel
 11:00 am (SH) †Frances Miller

(SV)—St. Jude Parish, St Vincent Church
 (SH)—St. Jude Parish, Sacred Heart Church

IN LOVING REMEMBRANCE

The Sanctuary Candle Memorial

The Sanctuary Candle is burning this week in memory of

Bill Nolte

LITURGICAL ROLES FOR FEBRUARY 24 & 25

Lectors

4:30 pm (SV) M. Sedlachek, L. Megal
 7:30 am (SH) B. Poliak, R. Lepianka
 9:30 am (SV) D. Dettlaff, J. Boyce
 11:00 am (SH) J. Scherer, K. Neuens

Eucharistic Ministers

4:30 pm (SV) M. Petzold, A. Sedlachek,
 S. Knobloch
 7:30 am (SH) J. & N. Ratchman
 9:30 am (SV) C. O'Connor, P. LeBouton
 11:00 am (SH) S. & T. Jaeke

Servers

4:30 pm (SV) **2 NEEDED**
 7:30 am (SH) **2 NEEDED**
 9:30 am (SV) O'Connors
 11:00 am (SH) **2 NEEDED**

Ushers

4:30 pm (SV) B. Baier, J. Beck,
 M. Hansen, J. Reichenberger
 7:30 am (SH) T. Donahue, B. Dumann,
 J. Paulick, R. Pribek
 9:30 am (SV) J. Schaefer, L. Schaefer,
 B. Schneider, P. Schaefer
 11:00 am (SH) P. Pickart, **3 NEEDED**

Musicians

4:30 pm (SV) M. Gallenberg, L. Gustke
 7:30 am (SH) K. Zellner, M. Potter
 9:30 am (SV) St. Jude Choir, M. Potter
 11:00 am (SH) P. Rudolph, M. Potter

Sacristans

4:30 pm (SV) Tim McEnroe
 7:30 am (SH) Nancy Ratchman
 9:30 am (SV) Mary D'Angelo
 11:00 am (SH) Sue Jaeke

Greeters

4:30 pm (SV) J. Meyer, B. Dahlke
 7:30 am (SH) R. Lepianka, B. Richmond
 9:30 am (SV) A. Nitz, **1 NEEDED**
 11:00 am (SH) C. Scherer, K. Honsinger

Church Openers

4:30 pm (SV) Clarice Warnke
 7:30 am (SH) Joe Drexler
 9:30 am (SV) Mary Putzer

WEEKLY COLLECTION FOR FEBRUARY 10 & 11

Envelopes	\$10,579.75
Loose	\$838.25
WeShare	\$723.74
Direct	\$323.00
Other	\$0.00
Total	\$12,264.74
Budget	\$13,461.54

WEEKLY CALENDAR

Monday, February 19

8:30 am Bible Study (LH)
 4:00 pm Father Carr Meals (Place 2B)
 6:00 pm Card Group (LH)

Tuesday, February 20

8:00 am Perpetual Help Devotion (SV)
 1:00 pm Book Discussion (PC)
 1:30 pm Legion of Mary (PC)
 5:30 pm Soup & Stations (SH/LH)

Wednesday, February 21

5:30 am TMIY (LH)
 11:00 am Senior Potluck (LH)
 6:00 pm Elem/MS RE (SVS)

Thursday, February 22

9:00 am Book Discussion (PC)
 1:00 pm Marian Prayer (SH)

Friday, February 23

12:15 pm Soup & Stations (SV/HR)

HR—Heritage Room (St. Vincent site)
 BH—Bastian Hall (St. Vincent site)
 SV—St. Vincent Church
 SH—Sacred Heart Church
 LH—Leannah Hall (Sacred Heart site)
 PC—Parish Center (Office Building)
 SVS—St. Vincent School Building

COMMUNION TO SHUT-INS

February 18 Eddie & Sara Clements
February 25 Mary Paulick
March 3 Pat Balke
March 10 Chris King

READINGS FOR THE WEEK

Sunday, February 18

Gn 9:8-15/Ps 25:4-5, 6-7, 8-9 (see 10)/1
 Pt 3:18-22/Mk 1:12-15

Monday, February 19

Lv 19:1-2, 11-18/Ps 19:8, 9, 10, 15/Mt
 25:31-46

Tuesday, February 20

Is 55:10-11/Ps 34:4-5, 6-7, 16-17, 18-
 19/Mt 6:7-15

Wednesday, February 21

Jon 3:1-10/Ps 51:3-4, 12-13, 18-19/Lk
 11:29-32

Thursday, February 22

1 Pt 5:1-4/Ps 23:1-3a, 4, 5, 6/Mt 16:13-
 19

Friday, February 23

Ez 18:21-28/Ps 130:1-2, 3-4, 5-7a, 7bc-
 8/Mt 5:20-26

Saturday, February 24

Dt 26:16-19/Ps 119:1-2, 4-5, 7-8/Mt
 5:43-48

Sunday, February 25

Gn 22:1-2, 9a, 10-13, 15-18/Ps 116:10,
 15, 16-17, 18-19 (116:9)/ Rom 8:31b-
 34/Mk 9:2-10

KONRAD-BEHLMAN
FUNERAL HOME

"Serving all Faiths" in Oshkosh
and the Fox Valley since 1875

Specializing in Retirement Planning, Medicaid, Spend
Down and Burial Space Protection of Assets.

Two Oshkosh locations to serve You better!
(920) 231-1510  
www.konrad-behlman.com

KUNDE
MEMORIALS, Inc.

Granite - Marble - Bronze

Quality Workmanship
www.kundememorials.com
1690 Ohio St. 235-5822



Landscape Design And Installation
www.landscape-solutionswi.com
2979 W. 20th Ave., Oshkosh, WI 54904
920-420-8054

GREEN BAY
DIOCESAN MUSEUM
At St. Francis Xavier Cathedral

140 So. Madison St.
Green Bay, WI 54301

Tours Available
Phone **920-432-4348**


HELPLINE: 729-4571
Short Term Help


LANDSCAPE & FIREPLACE

1990 W. Snell Rd., Oshkosh
New Hwy 45 just North of Hwy 41
(920) 231-1994
www.zillges.com

SHORT
STAFFED?

Place an ad here to find
new local talent for
your business.

IF YOU LIVE ALONE

MDMedAlert!™ As Low As **\$19⁹⁵** /mo.

✓ Ambulance ✓ Police/Fire
✓ Family/Friends ✓ GPS & Fall Alert

CALL NOW! 800.808.9294

md-medalert.com


LOURDES
ACADEMY

Prepared for College. Prepared for Good.™
Faith-filled PreK-12 education

Call **920.426.6421**
for a tour
or visit www.Lourdes.today


526 W. 11th Ave.
Oshkosh, WI 54902
(920) 233-8334
Fax 233-8364

POESCHL PRINTING
COMPANY, INC.


CALL
800-950-9952


Gomach Plumbing LLC
Residential • Commercial
New Construction • Remodels • Repairs • Service
712 Ohio St., Ste. B, Oshkosh
Serving Oshkosh and the Fox Valley
Call for a FREE Quote!
920-420-7815

Place Your Ad Here and
Support our Parish!

Instantly create and
purchase an ad with

AD CREATOR STUDIO


4lpi.com/adcreator




✓ Voted Best
Roofing Contractor
14 Years Running


(920) 426-4008
hickeyroofing@msn.com


SUPPORT
OUR PARISH

Local business ads
sponsor the printing of
our bulletin.
4lpi.com/adcreator

G REINKE & CO
Quality Service Since 1908
Monuments • Markers • Mausoleums
Laser etching of scenes and
photos on granite or glass
www.greinkeandco.com
920-231-0650 800-378-9073
After Hours Call 233-6260
900 S Main **920-231-0650**

SUPPORT
OUR
ADVERTISERS!

ADT-Monitored Home Security
Get 24-Hour Protection From a Name You Can Trust

- Burglary
- Fire Safety
- Flood Detection
- Carbon Monoxide


Authorized Provider | SafeStreets
833-287-3502



LET'S GROW
YOUR BUSINESS

Place Your Ad Here
and Support Our Parish!

CONTACT ME
Janet Axtell

jaxtell@4LPi.com
(800) 950-9952 x2539

Shaun P. McDonald, M.D.
Board Certified Dermatologist



515 S. Washburn St., Ste. 204
Oshkosh, WI 54904
920 232-1130 fax: 920 232-1175
www.foxvalleydermatology.com

Packer Valley
Builders, Inc.
"CARPENTER NEEDED"

www.packervalley.com (920) 232-7620

Nekimi Cabinetry
"Cabinet Maker Needed"

www.nekimicabinetry.com (920) 232-7625
Office & Showroom
2277 Clairville Road • Oshkosh, WI 54904


FREE
AD
DESIGN
with
purchase
of this
space


Marsh Family Eyecare
(920) 426-2020

Now Open at 2510 W. 9th Ave.

Fiss & Bills - Poklasny
Funeral Homes & Crematory
Serving All Faiths Since 1904

865 S. Westhaven Dr.
870 W. South Park Ave.
920-235-1170
fissbillspoklasnyfuneralhome.com

W I H L M
d e n t a l


Michelle A. Wihlm, D.D.S.
Ruth A. Marx, D.D.S.
920-231-0060
wihlmdental.com
info@wihlmdental.com
2530 West 9th Avenue
Oshkosh, WI 54904
~ Premier Family Dentistry

BERNDT
EXCAVATING, INC.


OSHKOSH, WI
235-3331

CALL
800-950-9952

K and C PEST CONTROL

4711 County Rd GG,
Oshkosh
920-582-9000
www.kandcpestcontrol.com

We make it new
by VAN DYNE UPHOLSTERY



From residential to commercial we can do it all! Mention this ad and receive 20% off your fabric selection on your next project!

Call us today to schedule your appointment:
Abby Quinn: 920-685-2838
Sales Associate
Abby@wemakeitnew.com

f @vandyneupholstery i @we.make.it.new_vdu



ClarityCare
**NOW HIRING
CAREGIVERS
IN YOUR AREA**
\$1,000 SIGN ON BONUS!

POSITION DETAILS

- FULL-TIME POSITIONS AVAILABLE
- PART-TIME POSITIONS AVAILABLE
- NO EXPERIENCE NECESSARY
- FLEXIBLE SCHEDULES
- COMPETITIVE PAY
- STARTING PAY \$14/hr, UP TO \$15 WITH EXPERIENCE
- PAID TIME OFF
- RETIREMENT PLAN
- C.N.A. CLASS REIMBURSEMENT PROGRAM



APPLY ONLINE AT CLARITYCARE.ORG/APPLY OR CALL (920) 236-6560 X 1415
TEXT "CAREERS" TO (920) 345-5595 TO CONTACT OUR RECRUITERS

the GroundsGuys

Kelly Flanigan
Owner
920.410.5220

**Full landscape, lawn maintenance
& snow removal services**

appletonandoshkosh.owner@groundsguys.com
GroundsGuys.com

BECK'S MEAT PROCESSING

519 Clairville Rd • Oshkosh
589-2104
1003 N. Main St • Oshkosh
230-3393
Mon-Fri: 8-4³⁰ • Sat: 8-12

health
markets

The Smarter Way to Shop...

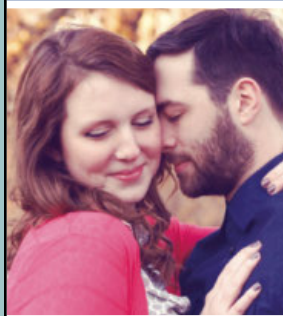
- Health • Medicare
- Life Insurance • Supplemental
- Long-Term Care • Retirement

Call today for your FREE QUOTE!
(920) 420-9399

Matthew J Melcher - Licensed Insurance Agent

Health Insurance Agency Inc. is licensed as an insurance agency in all 50 states and the District of Columbia. Not all agencies are in every state. All products and services are subject to underwriting. Please see the actual policy for complete details. © 2012 Health Insurance Agency Inc. All rights reserved.

catholicmatch®
Wisconsin



CatholicMatch.com/WI

**WE APPRECIATE OUR
ADVERTISERS!**

They allow us to print
this bulletin. Thank you!

NEVER MISS OUR BULLETIN!

SUBSCRIBE

Have our bulletin
emailed to you
every week.



Visit www.parishesonline.com



Member FDIC and
West Pointe Bancshares, Inc.



SUPPORT OUR ADVERTISERS!

WE'RE HIRING!
AD SALES EXECUTIVES

BE YOURSELF.
BRING YOUR PASSION.
WORK WITH PURPOSE.

- Paid training
- Some travel
- Work-life balance
- Full-Time with benefits
- Serve your community



Contact us at
careers@4lpi.com or
www.4lpi.com/careers



Condo's, Homes, Multi-Family, Land/Lots
One Stop Realty Shop! Buy or Sell, Give me a Yell.

511 W. Murdock Ave.
Oshkosh, WI 54901

(920) 642-0980
chris@cmcprealty.com
cmcprealty.com



Chris
McPhetridge



920-420-5185

www.QuandtPlumbingLLC.com
MP#1013913
Members of St. Jude the Apostle
2909 Green Hill Ct., Ste D • Oshkosh

LAKE-AIRE
COMPLETE AUTO SERVICE



2200 Montana St. • 920-231-1023

Edward Jones

**Because every
moment is
for living.**

Let's partner through all of it.



Jamie Neabling, AAMS™
Financial Advisor
1425 S Washburn St
Oshkosh, WI 54904-8134
920-426-3669

> edwardjones.com | Member SIPC



For ad info. call 1-800-950-9952 • www.4lpi.com

St. Jude the Apostle, Oshkosh, WI

A 4C 01-0954